

## Description

**VITA** is a fire detection panel capable of detecting fire via wired or wireless connected devices. With an intuitive touchscreen interface, it can provide information and be configured in a simple and intuitive way.

## Features

**VITA** is a multiprotocol, microprocessor-based panel. It is capable of managing up to 240 addressable devices in open or closed loops. The basic configuration can be expanded from 1 loop to 9 loops by adding two loop cards to control up to 2160 devices.

For complex applications, it can be installed in a ring network (up to 32 control panels) where zones and areas controlled by detection devices can be managed via sophisticated programmable logic to trigger events at the central unit.

By installing additional boards, it is also possible to add peripheral devices to the main panel, such as keyboards, printers and LED panels.

Connected detectors and devices are monitored and diagnosed via the control panel. All the test procedures can be performed via **VITA** to assess the status of each component, thus simplifying and speeding up the periodic maintenance process. Diagnostic and historical data recorded can be easily exported in CSV/Excel format.

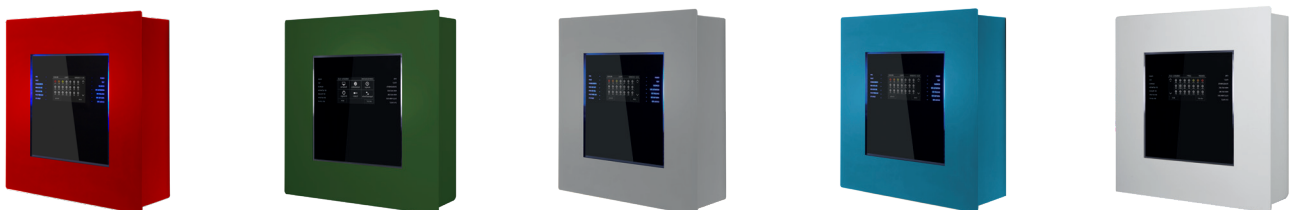
A simple and ergonomic touch screen human-machine interface provides any type of user with intuitive interaction without any time or training costs.

The control panel can be customized for all installation conditions; hardware colour, display background, colour of the programmable LEDs, logo displayed on the welcome screen and language can be chosen as desired.

**VITA** can be programmed both on site and remotely, using the dedicated ETCLOUD online platform and data can be exported and imported via a USB memory stick. Monitoring is by the WINWATCH32 supervision system.

The device is certified to EN 54-2 and EN 54-4 for fire detection and signalling systems. It offers three different levels of access depending on the operator (installer, safety manager, end user).

## Custom colours



## General technical data

Dimensions	410 x 410 x 120 mm
Weight (without batteries)	6.1 kg
External material	Iron painted with epoxy
Body colour	White, Black, Custom colours
Front LEDs	14
Background colour	Black, Blue, Green

## Applications

**VITA** is suitable for small, medium and large installations in the following fields:

- >> Banks and financial buildings
- >> Government and scholastic buildings
- >> Centers and commercial buildings
- >> Industry ports and energy
- >> Offices and residential buildings
- >> Healthcare buildings
- >> Sports and entertainment buildings
- >> Airports and railway stations
- >> Historical buildings
- >> Hospitality
- >> Other supervision and control systems

## Teledata

Via Brescia 24G - Cernusco sul Naviglio (MI) - 20063 - Italy  
tel.: +39 02 27 201 352 - +39 02 25 92 796 | mail: info@teledata-i.com

## New era of fire alarm detection

**VITA** is marking a new era of innovation in fire detection and alarm system technology. System surpasses the performance of any addressable panel in the market. Based on state of the art 32-bit microprocessor technology, **VITA** can communicate swiftly over a 5Km loop length, fully loaded with 240 loop devices. The TOUCH user interface enhances the user's experience by making navigation through menus, programming and response times faster, easier and more effective.

## Don't just read - TOUCH!

Today, interacting by TOUCH is part of everything around us and everything we do. Fire alarm control panels should not be any different. **VITA** is not just a user interface; it is the graphical representation of commands, functions, and important information on the fire alarm control panel. All the commands, information, devices and zones are presented using simple graphical pictures, which increases the ease of use. Additional peace-of-mind comes from the panel's three levels of user passwords. These ensure that only qualified people have access to the right information they need.



## Language-friendly innovation

With **VITA** the user has a huge number of languages to choose from, with even the most difficult characters displayed on the advanced touch panel. Easy communication is the main mission of Teledata research and development team, making communication with the user a much simpler task.

## Advanced architecture means low-cost installations

Each loop connected to the **VITA** panel can accommodate up to 240 devices in any combination. The panel utilizes the robust **VITA** protocol that can extend up to 3500 m using 1.5 mm fire-rated cables. Each loop can support all devices with isolators which facilitate fault-finding and protect the other devices in case of a single failure.

## Solid networking, means solid communication

**VITA** can communicate to 128 panels on a fault tolerant ring network. The distance between one panel and another does not exceed 1Km. The **VITA** panels utilize CAN bus as a network protocol. This rigid protocol has been proven to meet the highest standards of communication of the automotive and the aviation industry. It has proven excellent resilience to noisy environments in industrial installations.

## Easy to program

**VITA** addresses all the devices electronically. No dip-switches, rotary switches or bar-code scanning are required. This feature not only makes programming faster and easier; it also can provide a safe-addressing topology to the devices on the loop, including all sounder tones, flasher speeds, day and night sensitivity settings, holiday setting, automatic commissioning test, unlimited time delays, alarm duration, pre-alarm commissioning, double-knock events, special event linked programs, to name just a few of its powerful commissioning capabilities.

## Maintenance is now easy

Effective maintenance is, in fact, the most important function of after-sales service that Teledata strives to provide to its clients. Now detector alerts appear in a colourful, graphical presentation rather than in written format. A **white** detector means clean, **green** means some dirt has been identified, **yellow** means an increase in the level of dirt, and finally, **red** means replace the detector. While the Teledata detectors are already equipped with drift compensation and patented double dust trap, easy to identify maintenance support is the key feature of **VITA**. In addition, all the other main functions such as disabled devices will appear in the much easier to understand graphical presentation. Finally, storage of over 850 events will make the panel ready to accommodate a lengthy history of events for the user to scroll through.

## ET Cloud: new era of commissioning

With ET CLOUD the commissioning is now more innovative. The panel can be programmed in different ways, such as USB import and direct programming from the touch screen. ET CLOUD programming innovated the cloud based programming, allowing the engineer to program the panel over the cloud, thus saving both time and visits to the site. Finally, the programming being saved on the ET CLOUD platform can be shared and modified by more specialized personnel for instant remote support anywhere in the world.

## Flushed frame

**VITA**'s design allows for a flush-mounted installation, making the already good looking panel even more aesthetically pleasing.





### Electrical data

Power supply	230 V ac 50 Hz
Max. current drawn	300 mA
Batteries	2x12 V dc 17 Ah
Auxiliary supply output	24 V dc / 1 A
Max. current available for the loop	500 mA
Electrical protection	Short circuit protection fuse F4 Ah
Battery protection	Efficiency control. Disconnection in case of over discharge.
General fault report relay	Max. 1 A / 30 V dc - 120 V ac

### Software specifications

Supported devices	Apollo (XP 95, Discovery, Core protocol) & Argus Protocol
Supervising communication protocol	CEI ABI with ET CONNECT MODBUS with ET MODBUS
Area partitioning	Up to 192
Logical functions	Up to 192
Event archive	Up to 1000
Programming	Locally with keyboard remote with ET Cloud software
Access safety	Multilevel password
Languages	111 including special characters and symbols

### Hardware specifications

Microprocessor	32 bit
Master board	TD571
Memory	RAM: 2 MB Flash: 512 KB EEPROM: 4 MB
Display	Touchscreen 480x272 TFT 4.3"
Number of loops	1 (expandable to 9)
Analogue line connection	Open or closed loop
Detection line length	Up to 5000 m
Remote keyboard distance	Up to 800 m
Cable knockouts	4x25 mm
Alarm sounder	Silencing and/or excludable buzzer
Sounder output or tel. combiner	24 V dc 1 A
Solid form output with clean contacts	1 A 30 V dc / 120 V ac
Max. general output with open collector	100 V peak - 100 mA
Peripheral devices in serial line	RS485
Input/output for programming	Micro USB
Internal protection level	IP 30
Operating temperature	-5 to +40 °C
Storage temperature	-40 to +70 °C

### Certifications

2004/108/EC	EMC
2006/95/EC	Low voltage
UNI EN 54-2	Control and signalling unit
UNI EN 54-4 (A2:2006)	Power supply



## Accessories

Expansion loop card	ET 2
Central unit ring connection card	ET RING
56 zone LED card	ET 56
LAN or WAN network card	ET CONNECT
MODBUS communication card	ET MODBUS
Remote keyboard card	ET KBD
Additional supply	ET PW

## Expansions

Loops	Up to 9, open or closed (with ET 2 board)
Devices per loop	Up to 240 (analogue, digital)
Devices per control panel	Up to 2160 (with ET 2 board)
Control panels which can be connected in a single loop	Up to 32 (with ET RING board)
Devices per ring of panels	Up to 69120
Connectable remote keyboards	Up to 16 ET KBD
Connectable printer	ET PRINTER

## Cards current absorption

Code	Description	Current stand by mA	Current in alarm by mA
VITA master card	Analogue control unit 1 loop expandible up to 9 loops with touch-screen	190 mA	240 mA
ET 2 expansion card	Expansion 2 loops for VITA	40 mA	40 mA
ET RING	Card for ring network for Olympia and VITA	33 mA	33 mA
ET CONNECT	Ethernet adapter	100 mA	100 mA
ET 607	1 monitored outputs card	2 mA	12 mA
ET 615	1 monitored outputs card	3 mA	15 mA
ET 56	VITA 56 LED board	1 mA 1	60 mA

## Manufacturer data

Legal Site: Via Brescia 24 G - 20063  
 Cernusco sul Naviglio (MI)