

Description

Sensor detecting water on the floor through 2 gold plated supporting feet.

It is normally used for protection against the flooding of computing centres, boiler rooms, offices, laboratories, etc.

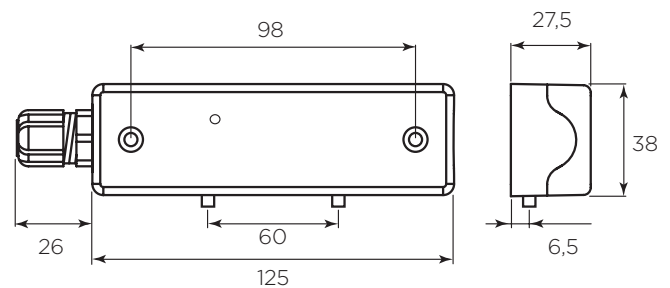
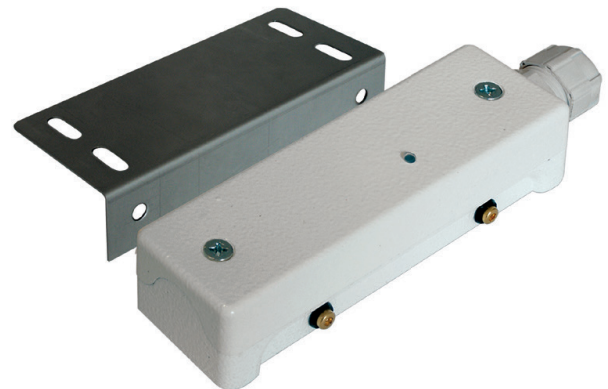
The sensor contained into aluminium case epoxy white painting is equipped with a steel support that allows to detect liquid at height ranging from 0 to 11 mm according to specific needs.

In alarm condition, relay changes its status and led lights. Remote testing and inhibition functions. The circuit is oscillating to prevent electrolysis and corrosion problem.

7 wire connection for 2450-N and terminal for 2450-NM: 2 power terminals, 3 terminal for changeover relay output, 1 for remote test, 1 terminal for inhibition. Version 2450-N offers a protection degree IP 67 thanks to full epoxy resin encapsulation. Trimmer adjustable alarm threshold for the resistor in version 2450-NM.

It can not be used with inflammable liquids.

- > High mechanical resistance
- > Low consumption
- > Corrosion-proof system
- > Wire or terminal connections
- > Alarm signal LED
- > Relay output



General Specifications

Housing material	Die-cast aluminium, epoxy white painting
Operation	Detection of resistance between feet. Changeover relay output
Type of connection	Wire (N°7 wires) or terminal
Detection level	0 - 11 mm
Cable length	4 m
Operating temperature	-15°C / +70°C
Operating voltage	12 / 24 Vdc
Maximum consumption	32 mA
Standby consumption	13 mA
Weight	790 g
Standard equipment	Mounting bracket. 3/8", Press hose M16
IP Degree	IP 65 / IP 67
Packaging	1 pc. / package