

Description

This product is a resettable fire emergency call point.

Each ONECALLPOINT_AP is provided with an integrated isolator circuit, that automatically takes action in case of need.

The ONEPROTOCOLL employed by the monitoring control panel provides high rates of information.

ONECALLPOINT_AP must only be connected to control panels that use the ONEPROTOCOLL proprietary analogue intelligent addressable communication protocol. The address can be programmed by mean of the ONEPROGRAMMER_AP or with the addressing function of Teledata smoke detection panels.

Technical Specifications

Supply voltage range	18 - 27V
Stand by consumption	270µA
Alarm consumption	6mA (LED on)
Operating temperature range	-20°C ~ +65°C
Max. Humidity	95% RH (no condensation)
Dimension	87 X 87 X 54 mm
Max. Cable cross section	2.5 mm

Short Circuit Isolator

All standard series devices are provided with short-circuit monitoring isolators on the intelligent loop's line and can be activated by the control panel.

LED Indicator

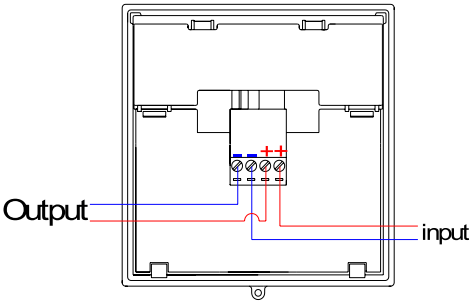
This device is provided with a 3 color led, red green and orange that provide optical indication of the status of the device.

This indicator is controlled by the control panel.

Installation

This ONECALLPOINT_AP must be used in combination with compatible control panels employing the ONEPROTOCOLL communication protocol. Connections to the ONECALLPOINT_AP terminals are polarity sensitive, please check the wiring diagram in figure.

The address can be programmed by means of the ONEPROGRAMMER_AP or with the addressing function of Teledata smoke detection panels. ONECALLPOINT_AP is a Type A for indoor use. To perform the installation, the front device must be securely installed on the wall. Two types of installations can be implemented: Surface mounting and flush mounting.



Installing and Uninstalling the Front Device

To remove the front device from the supplied back box use the reset key, insert them in to the slot on the top of call point, Then push up until the front element is locked off (picture1).



Picture 1

Activation

The ONECALLPOINT_AP is activated by pressing the central point (picture2).



Picture 2

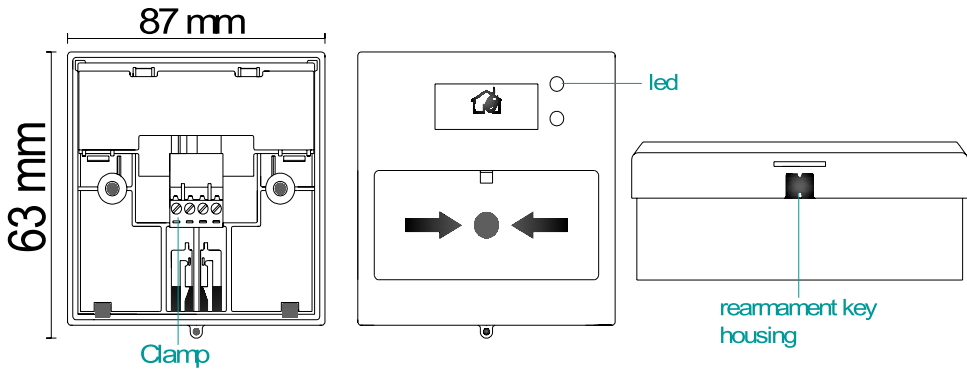
Reset

The ONECALLPOINT_AP, after use, can be re-armed using the provided key, insert the key into the hole under the device and press (picture3).



Picture 3

Dimension



Warnings And Limitations

Our devices use high quality electronic components and plastic materials that are highly resistant to environmental deterioration. However, after 10 years of continuous operation, it is advisable to replace the devices in order to minimize the risk of reduced performance caused by external factors. Ensure that this device is only used with compatible control panels. Detection systems must be checked, serviced and maintained on a regular basis to confirm correct operation.

Smoke sensors may respond differently to various kinds of smoke particles, thus application advice should be sought for special risks. Sensors cannot respond correctly if barriers exist between them and the fire location and may be affected by special environmental conditions. Refer to and follow national codes of practice and other internationally recognized fire engineering standards.

Appropriate risk assessment should be carried out initially to determine correct design criteria and updated periodically.

Warranty

This warranty is invalidated by mechanical or electrical damage caused in the field by incorrect handling or usage.

Product must be returned via your authorized supplier for repair or replacement together with full information on any problem identified.

Full details on our warranty and product's returns policy can be obtained upon request



TELEDATA S.R.L.
Via Brescia 24 G
20063
Cernusco S.N.
Milano

EN 54-11
EN 54-17
ONECALLPOINT_AP
0370-CPR-3637