

 Teledataone 



DESIGN

MILANO

FIRE System

FIRE DETECTION Solution

The TELEDATA products for the fire detection are compliant to the legislations in force EN 54/2 54/4 related to the fire detection (EN 54-2) and the power supply (EN 54-4). The TELEDATA fire detection panels are capable to manage up to 240 detectors for loop offering solutions from 1 loop up to 16 loops.

TELEDATA offers technical innovations such as

- The use of a digital communication protocol on 2 voltage levels with the improvement of the quality and the reliability of the loop communication and the distance increment of the closed loop up to 6 Km.

Elegant design and available for all the different applications.

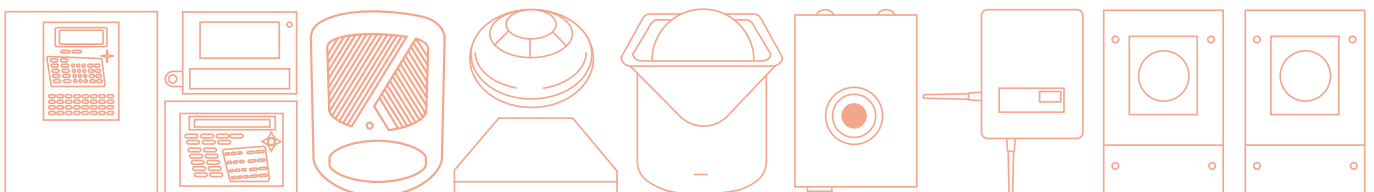
Available also in analog addressable version.

- The short cut detection integrated in the analog addressable modules and detectors, avoiding the use of external insulators.

The system management becomes easier by using the model ONE KBD remote keypads with push buttons, display and signaling LEDs.

The management of the control panel can be done by using any communication line or Ethernet network using the appropriate WINWATCH32 software.

The management of the fire control panels on graphic maps is integrated with the management of burglar, access control and building automation systems.



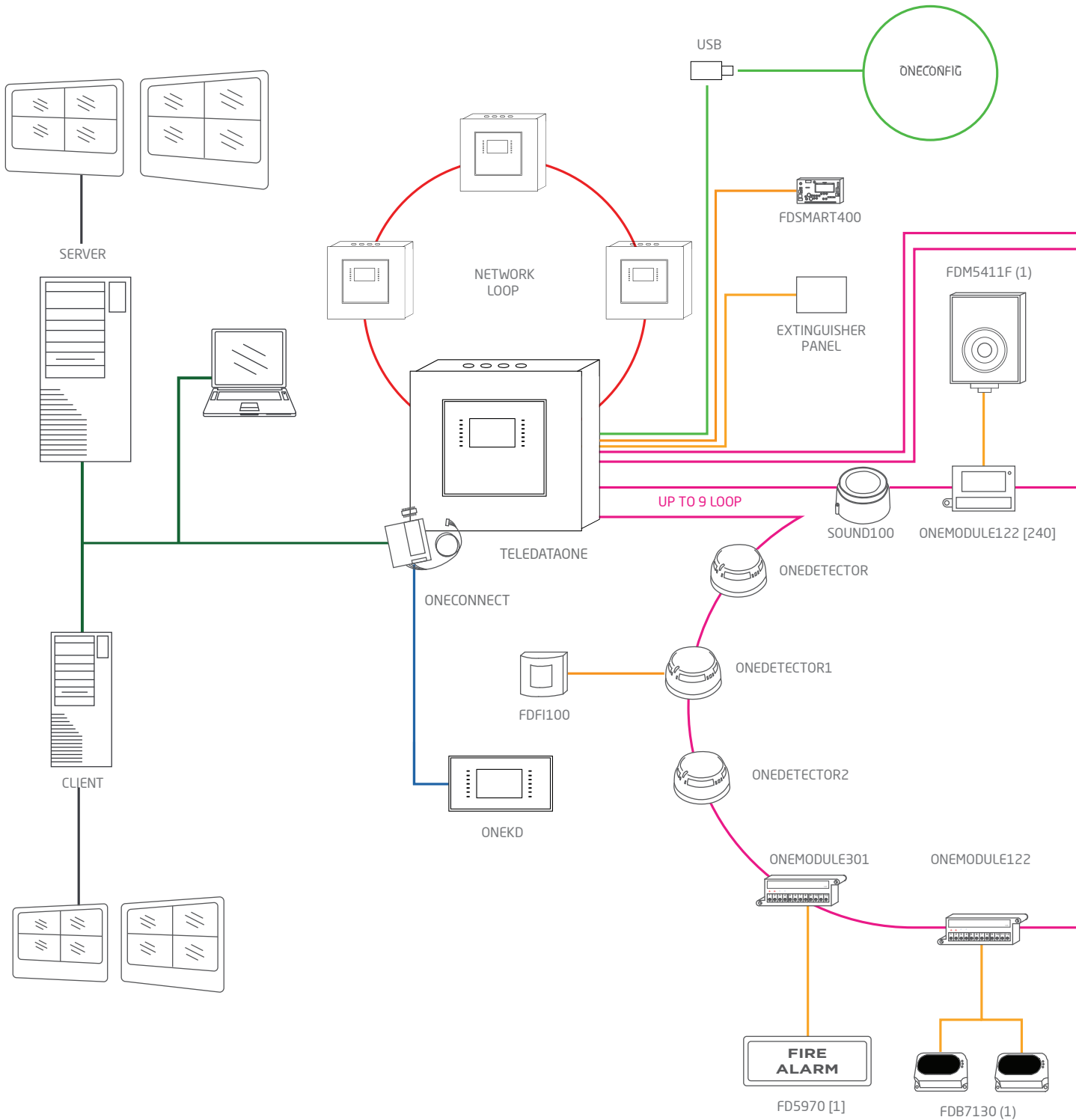


Teledata has been designing and manufacturing safety electronic devices for 40 years. In the early years, the company started its business manufacturing ad hoc electronic solutions for aerospace applications for national and foreign leader companies. This allowed the know-how of the company to achieve the highest levels in cutting-edge electronics sector.

During this period the company widened its horizons developing specific solutions for the safety field, which in the early eighties occupied a market in which no standard solution existed.

Over the years, Teledata continued investing in the safety field combining system design with large-scale manufacturing of high technological content. The company continued with the design and manufacturing of electronic devices, while constantly generating and increasing the value chain benefiting the final customers.

Teledata today offers a self production range of safety system and fire prevention products; it has an important presence on the international market, and gives an important contribution to export the Made in Italy excellence. The company participates in several national and international work committees sharing experience, necessities, goals, actions and values to have previews and perspectives for tomorrow's market.



TCP/IP NETWORK
(CAT5 cable)

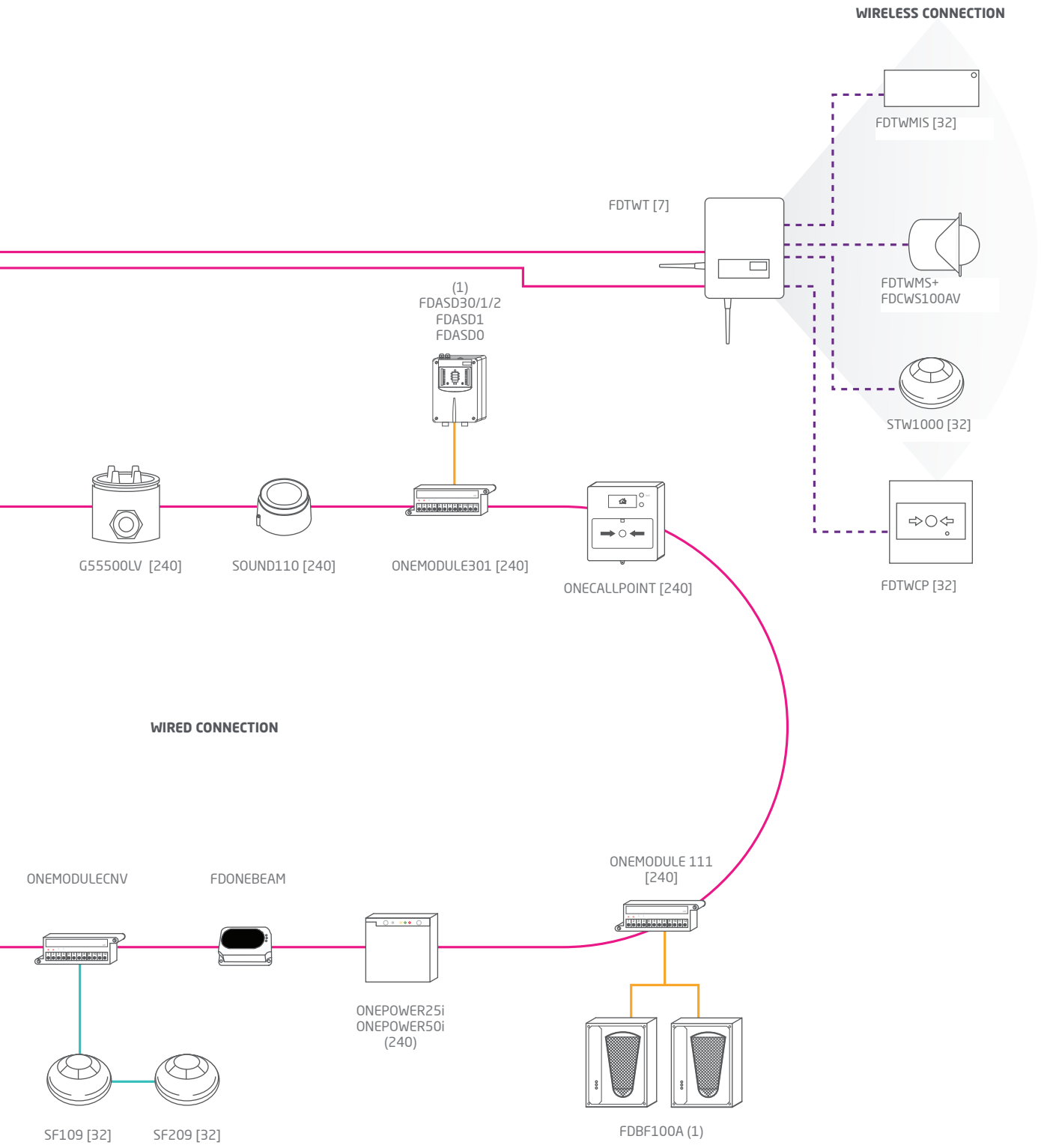
RS485 LINE
(Shielded, ant flame cable with 2 connectors for power supply and 2 connectors RS484 for signal)

SIGNAL
(Shielded, ant flame cable with 2 connectors for power supply and 2 connectors RS484 for signal)

POWER SUPPLY AND SIGNAL
(Shielded, ant flame cable with 2 connectors for signal and power supply)

WIRELESS
(Radio connection with 870 MHZ Frequency)

NETWORK LOOP
(Cat 5 cable)



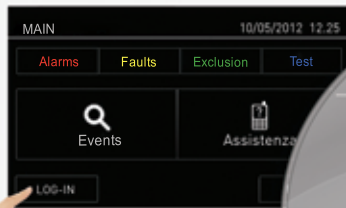
USB
(Upload download programming)

CLOSE LOOP WITH POWER SUPPLY
(Shielded, ant flame cable with 2 connectors for signal and power supply)

(x) = Maximum Number of connected device.
The devices can be added together ex: (x) + (x)

[x] = Maximum Number of connected device.
The device cannot be added together ex: (x) or

Superior technology and ease of use



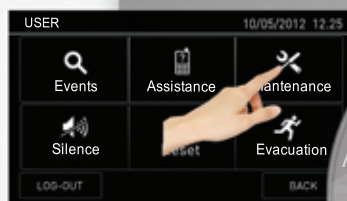
1. End User

For the first time in the fire industry, even the end-user can interact with a control panel! End-user can access to their own personal screen at any time, without a password, allowing them to see the events divided by: All , Alarms, Faults, Dates, Loop or by area. Or simply call assistance with a touch!



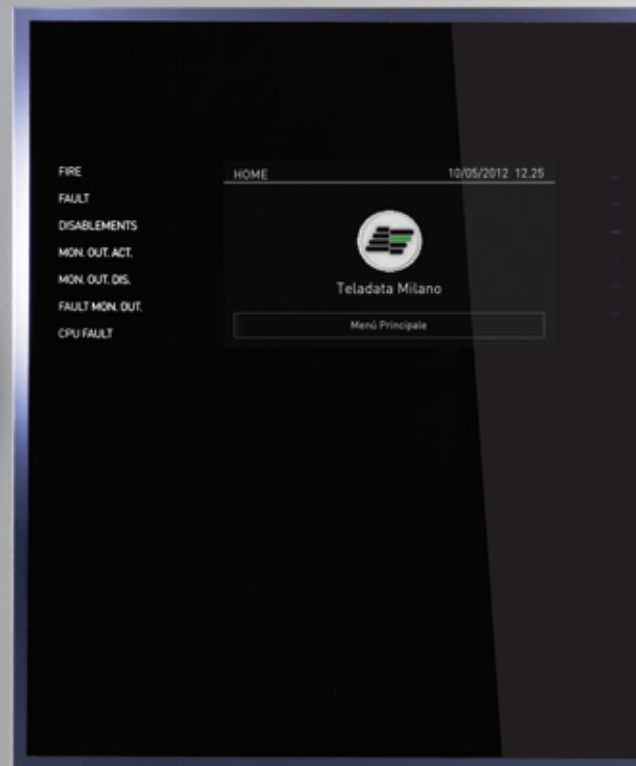
2. Log In

Once logged on the system, the end-user, maintenance technician or programmer will gain immediate access to his own user menu. Only the 4-6 keys specially designed for each user will appear on the touch screen! Everything is quick and easy: mistakes are virtually impossible! Finally a fire control panel that's easy-to-understand!



3. Operator Menu

Teledata one is a maintenance technician's dream. Traditional fire control panel force you to use conventional mini displays, often poorly back-lit, with endless menus, perhaps not even in your language, or require you to connect to a pc,

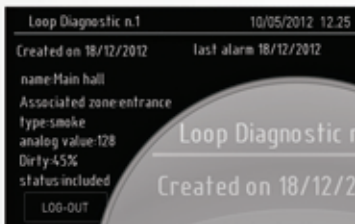


make this system truly UNIQUE!



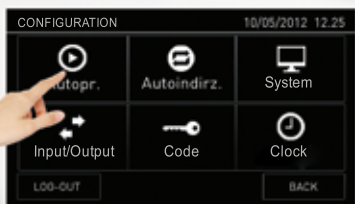
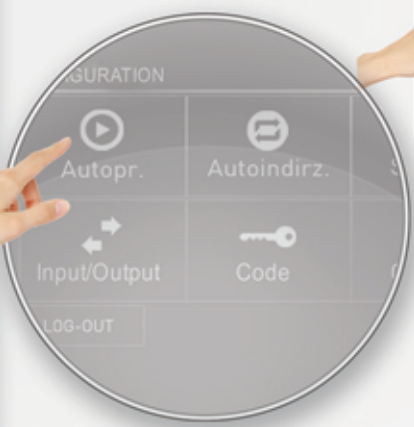
4. Diagnostic Map

Teledata One displays the status of the system in a single glance, thanks to its diagnostic map which provides full information: immediately visualizing detectors, input/output modules and all wireless devices marked with a "W". The level of dust and consequent inefficiency of a detector is indicated with different colours.



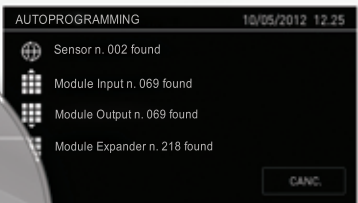
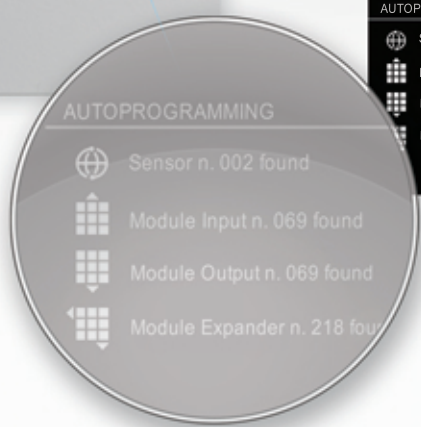
5. Detailed Information

By touching the icon of the device, detailed information will appear about the exact percentage of dust, making it easier to plan periodic maintenance. Since dusty detectors are no longer able to detect any smoke, you always need a complete maintenance tool for the entire system at your fingertips.



6. Configuration Menu

Teledata One is also the dream of every installer: it is autoaddressable, with no need for time-wasting dip-switches or conventional programming devices.



7. Autoprogramming

The control panel reads the entire field and automatically programs all the devices. Next, the diagnostic map displays everything that's been programmed by the control panel. It's so simple!

Completely touch screen and the new fire alarm system



Unique Design.

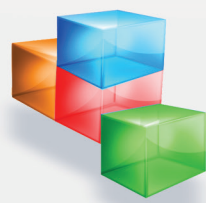
Its name is One, since it offers all the information and instructions you need on a single touch screen!
A unique Italian design with programmable side led.



Touch Interface.

It's made to be touched: the first certified fire panel fully touch!
A totally touch screen panel with easy use interface.

expandable to 9 loops, is made in Italy"



Custom.

Teledata One is available in: White, black, or in custom painted shades colours. A refined object of refined Italian design, which can also feature your trademark, since it is completely customizable, even with: White or tri-color backlighting LED. Fully customizable for OEM, certificate, logo and color.



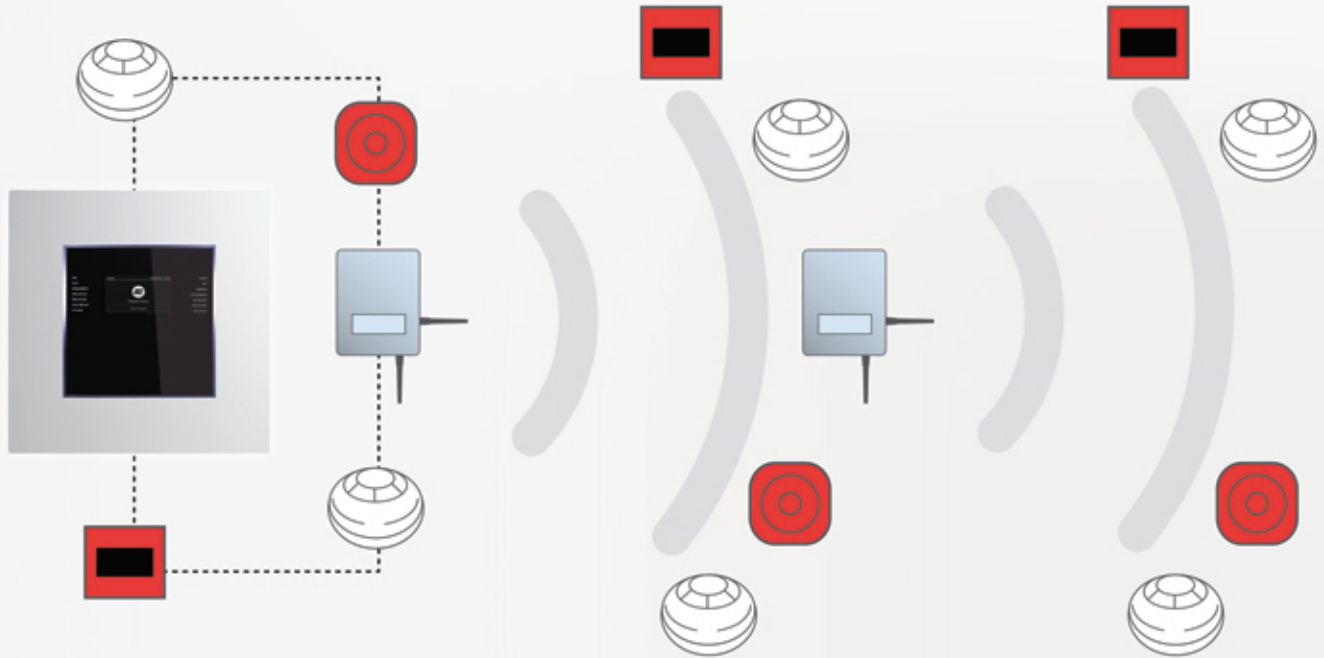
| LANGUAGE | | | 10/05/2012 12:25 | |
|----------|----------|---------|------------------|--|
| Italiano | Francais | Deutsch | | |
| English | Iran | Siria | | |
| LOG-OUT | | SAVE | BACK | |



All languages.

A superior quantity of characters and symbols. Up to 111 languages.

Safety & All in one!..



Wireless.

Hybrid solution for wired and wireless devices.

When combined with the extensive range of compatible industry leading control equipment, Teledata offers the most flexible wireless fire solution available today. Translator Modules are connected onto the control panel loop wiring, either on their own to form a fully wireless system, or mixed with wired field devices to form a Hybrid system. Each of these Translator Modules communicates with up to 128 field devices via a proven wireless protocol, processing the messages received from the field devices and transmitting information about themselves and the devices they support to the system's control equipment. All field devices have a wireless range of 150m in free air, but where greater distances are required the system is supported by a range of Expander and Router Modules which help

to propagate the radio signals. Multiple Translator Modules can be used on each control panel loop and each Translator Module can support multiple Expander Modules making it possible to configure systems of virtually any size and complexity. Where a non-addressable system or a system with an unsupported protocol is present, wireless detection devices can still be achieved in specific areas with the deployment of one Expander Module.

Simplicity

All for you!



Multi protocol.

Multi protocol devices and detectors.



Auto addressing.

Auto addressing function with logical mapping position.



Extinguish module.

Extinguish module option.



Expandibility.

Connect up to 128 panels on a network loop, to manage massive systems with more than 250,000 devices.



Redundancy.

The only fully redundant control panel made in Italy! All the individual components, from the CPU, to the power unit and other parts, can be redundant, to protect people's lives better, well beyond ordinary fire-prevention standards.



> TELEDATAONE 1 loop expandable to 9 addressable fire alarm control panel



TeledataOne, is the fire alarm control panel of the future, completely made in Italy. First alarm control panel with touch-screen technology certified EN 54-2 and 4. The GUI interface is user friendly, you can program the panel without the use of any manual. There are three access levels which facilitate the ease of use of each type of operation (installation, maintenance and End User visualization). TeledataOne is expandable up to 9 loops. With TeledataOne you can connect up 2160 devices, in fact each loop supports 240 devices. If you want to connect more loop devices you can create a ring of One through the OneRing, so your building will be even more secure.

TeledataOne allows to use addressable wireless devices and wired device in the same system. The panel records each alarm and fault, so they are visible into "historical events", you can filter and search each event by date, events type, zones and loops. All the historical events and the diagnostics of all the devices can be exported easily with a USB pendrive from the TeledataOne Panel.

TeledataOne also have a unique stylish design, the mechanical chassis is also available in different colors. The high-end technological background effect with a different LED colors can be added or removed. Also, on request, Teledata allow you to customize the panel inserting the digital logo of your company on the touch screen. TeledataOne is an international product, it manages up to 111 languages and their alphabets. To increase even more the easy of use for the programming of the TeledataOne panel there is OneCloud, the new area of commissioning! Thanks to OneCloud you can configure the panel with any type of device (PC, smartphone, tablet...) comfortably, far from central panel, and import the configuration on your TeledataOne easily with a USB pendrive



HARDWARE features

- Addressable fire alarm panel with 32-bit microprocessor
- LCD touchscreen display (480x272 TFT 4.3")
- Back light on/off and three settable colors
- 1 addressable loop, expandable up to 9 loops (with 4 ONE2) configurable as open or closed
- Digital protocol
- Frontal LEDs with three settable color: white, blue and green
- each loop supports 240 addressable devices
- Short-cut circuit protection
- 14 front LED for events
- Silenceable and excludable signaling buzzer
- Supervised output for Sounders/NAC Trigger: 500mA - 27.6VDC
- General Output dry contact: Max 1A / 30 VDC
- 1 general open collector output
- 1 RS 485 line for peripherals (maximum current value)
- 1 RS 232 and 1 micro USB for programming and remote management
- Ethernet card 10 Mbit/s (Optional ONECONNECT)
- 56 LED zone (option card ONE56)
- Ring Network Card between central (optional ONERING tab)
- Maximum 16 remote control panels can be connected to the RS485 BUS max 800m distance (ONEKBD)
- With four additional One2 needed supplementary power supply (ONEPW)
- Batteries: 7.2A /7.5A /17A /18 A
- Automatic test of efficiency batteries and battery disconnection in case of deep discharge
- Auxiliary power output 27,6 VDC 500mA with shortcut protection
- Dimensions: 410 x 410 x 120 mm
- Weight: 6,1Kg (without batteries)
- Power supply: 230VAC 50/60 Hz
- Max. current available for the loop: 300-500mA (depending on number of loops)
- Operating Temperature: -5 - +40 °C
- Maximum current: 0,64 A max
- Available current for auxiliary external loads: 500mA

SOFTWARE features

- 240 addressable devices for one loop
- hybrid systems wired/radio
- 192 programmable zones
- 192 logic functions
- more than 1000 events reported into archive
- Internal clock
- Auto programming analog devices on loop
- Mapping analog devices on the loop
- Ring connection with other stations using a fault tolerant network
- Multilingual management
- Customizable with personal logo
- Management of detectors and analog modules of different types:
 - Managed Thermal and optical detectors in the sema loop
 - Input modules
 - Output Modules
 - Buttons addressed
 - Analogue Addressable Sirens multiprotocol
- Colorful LED selectable
- Programmable locally or remotely by dedicated software
- Multi - Protocol Teledata and Apollo
- MODBUS TCP/IP/MODBUS RTU protocol over IP (TCP option card MCGTWMDB)
- Certified Product Standards EN54-2 and EN54-4
- CE Marking (EMC low-voltage directive)

Available Protocols for Teledata System Dealer:



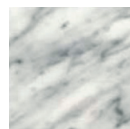
Available Protocols for OEM Panel Partner:



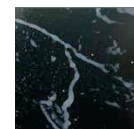
Custom Colors



MARBLE



CARRARA



BLACK

CUSTOM





> ONEMINI 1 loop addressable fire alarm control panel



HARDWARE Features

- Addressable 32-bit microprocessor panel with graphical touchscreen display (480 x 272 TFT 4.3 ")
- 1 addressable loop with digital protocol configurable as open or closed
- 240 addressable devices on loop
- Up to 16 remote control panels can be connected to the RS485 BUS max 800m distance (cod. Art. ONE KBD)
- Short circuit protection
- 14 Front LEDs
- 2 monitored output for siren or optical-acoustic signaling (27.6VDC 1A)
- General clean contact output 1A 30VDC
- 1 general fault output
- 1 RS 485 for peripherals
- 1 RS 232/micro USB for programming and remote management.
- Ethernet card 10-100 Mbit/s (optional cod. Art. PTLAN)
- 16 LED zones
- Ring network adapter between panels (optional cod. Art. ONERING)
- Battery capacity: 2 x 7.2 Ah
- Efficiency test batteries and battery disconnection in case of deep discharge
- Operating Temperature: -5°C - +40 °C
- Auxiliary power output 27,6 VDC 500mA with short protection
- Power supply: 230VAC 50/60Hz
- Dimensions: 330 x 310 x 80 mm
- Weight: 3.3kg (without batteries)

Available expansion and accessories for One Mini

- ONE RING
- ONEKBD
- ONECONNECT
- ONE16
- FDSMART400

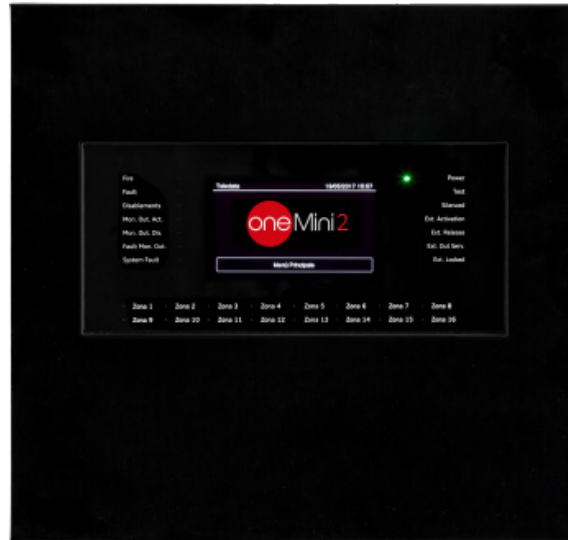
SOFTWARE Features

- Up to 240 addressable devices for the loop
- Hybrid system wired/radio
- Division up to 192 areas
- 96 logic functions
- Store more than 1000 events
- Auto programming analog devices on loop
- Mapping analog devices on loop
- Ring connecting with other central using a fault tolerant network
- Multilingual management
- Fully customizable with personal logo, Color
- Management of detectors and different types of analog modules
 - Thermal and optical detectors mixed
 - Input Modules
 - Output Modules
 - Buttons addressed
 - Analog Addressable sirens multiprotocol
- TCP/IP Protocol MODBUS/MODBUS RTU over TCP IP (optional cod. Art. MCGTWMDB)
- Certified Product Standards EN54-2 and EN54-4

| CODE | DESCRIPTION |
|-----------|---|
| ONEMINI | Complete of every characteristic |
| ONEMINIL | Like ONEMINI but without ONERING and ONEKBD |
| ONEMINISL | Like ONEMINI but without ONERING and ONEKBD and up to 120 devices |



> **ONEMINI2** 2 loop addressable fire alarm control panel



HARDWARE features

- Addressable 32-bit microprocessor panel with graphical touchscreen display (480 x 272 TFT 4.3 ")
- 1 addressable loop with digital protocol configurable as open or closed + 1 loop with expansion card
- 240 addressable devices on loop
- Up to 14 remote control panels can be connected to the RS485 BUS max 800m distance (cod. Art. ONEKBD)
- Short circuit protection
- 14 Front LEDs
- 2 monitored output for siren or optical-acoustic signaling (24Vdc 1A)
- General clean contact output 1A 30Vdc 120 Vac
- 1 general fault output
- 1 RS 485 for peripherals
- 1 RS 232/micro USB for programming and remote management.
- Ethernet card 10-100 Mbit/s (optional cod. ONECONNECT)
- 16 LED zones (optional card ONE16)
- Ring network adapter between panels (optional cod. Art. ONERING)
- Battery capacity: 2x 7,2 Ah, 2x 12 Ah, 2x 17 Ah (see chart below)
- Efficiency test batteries and battery disconnection in case of deep discharge
- Operatin temperature from 0° to 50° degrees
- Auxiliary power output 24 Vdc 500mA
- Dimensions: 330 x 310 x 90 mm (WxHxD)
- Power supply: 230 Vac

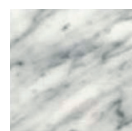
SOFTWARE features

- Up to 240 addressable devices for the loop
- Hybrid system wired/radio
- Division up to 192 areas
- 96 logic functions
- Store more than 1000 events
- Auto programming analog devices on loop
- Mapping analog devices on loop
- Loop monitoring through diagnostics
- Ring connecting with other central using a fault tolerant network
- Multilingual management
- Fully customizable with personal logo, Color
- Management of detectors and different types of analog modules
 - Thermal and optical detectors mixed
 - Input Modules
 - Output Modules
 - Addressed buttons
 - Analog Addressable sirens multiprotocol
- TCP/IP Protocol MODBUS/MODBUS RTU over TCP IP (optional cod. Art. ONEMODBUS)
- Certified Product Standards EN54-2 and EN54-4

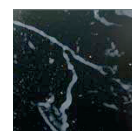
Custom Colors



MARBLE



CARRARA



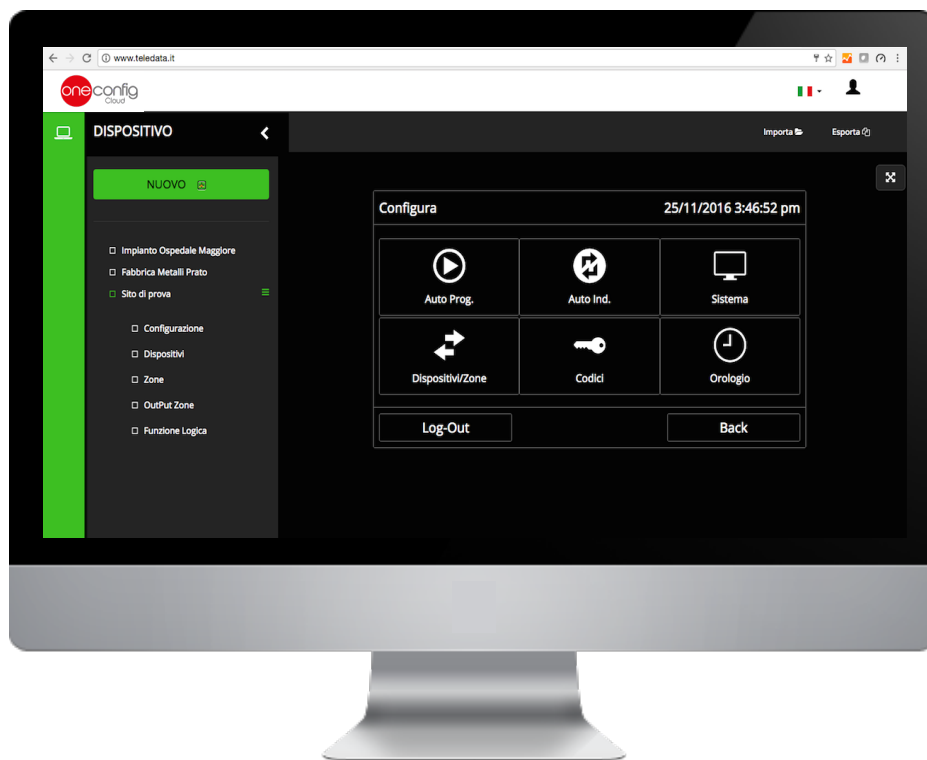
BLACK

CUSTOM





> ONECONFIG The new area of commissioning!



www.teledata.it

With OneCloud, the commissioning now is more innovative. The panels has different modes of programming capability, such as USB import, and direct programming from the touch screen; OneCloud innovated cloud based programming, allowing the engineer to program the panel over the cloud saving time and visits to site.

Additional unique industry benefits of OneCloud are:

- Same identical and user friendly GUI Interface of all the Teledata panel range (It's not necessary to learn two different programming tool anymore)
- Full back up of all your customers vital programming
- Live remote support on the actual programming which would be installed on site (done with customer authentication sharing permission)

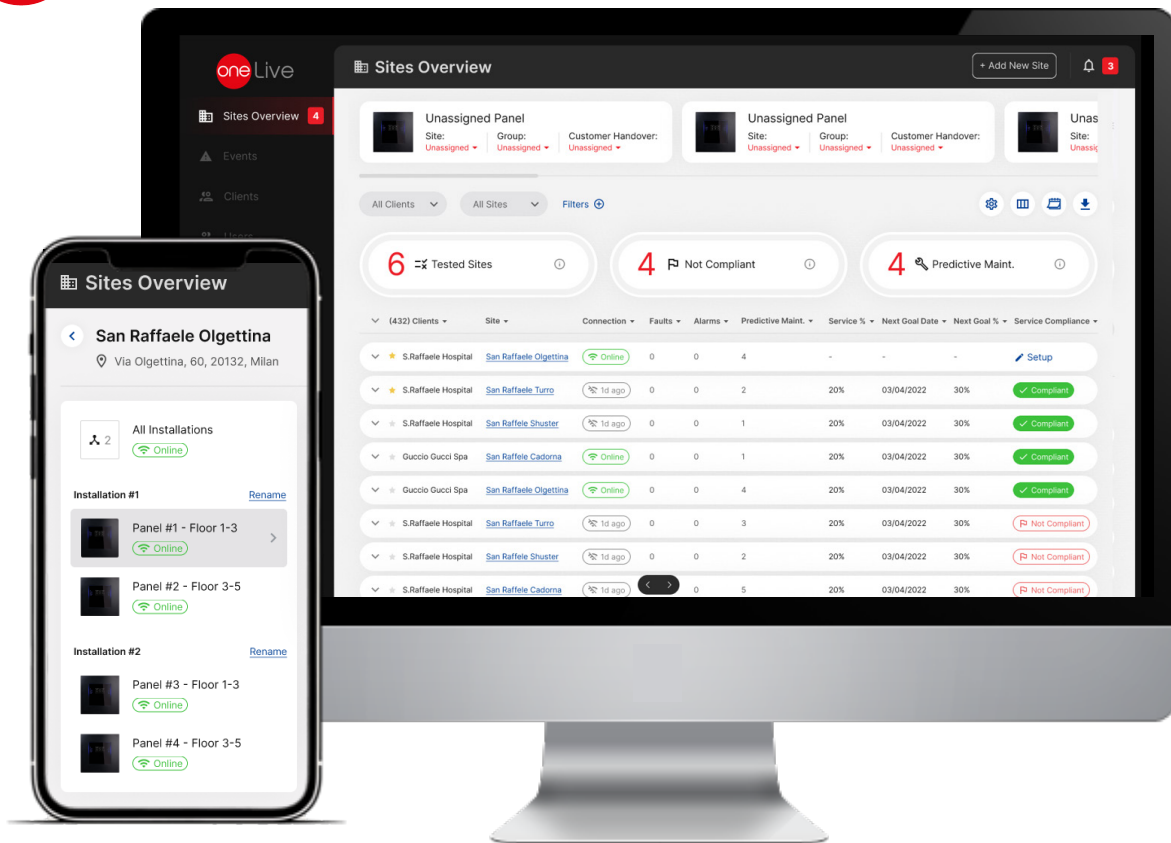
Everything free of charge!

> ONECONFIG Offline programming software



The software is also available in a downloadable local version, so that it can also be used in the absence of a network connection.

> ONELIVE Cloud-based maintenance software



Teledata is launching its innovative ONELIVE Remote Maintenance Platform, a cutting-edge tool that transforms the way you manage fire safety, ensuring regulatory compliance with unprecedented efficiency.

Forget the complexity of manual processes, paper documentation, and compliance uncertainties. ONELIVE is designed to give you total control, instant visibility, and significant savings.

Key Benefits and Features

- Automatic Reports: Dramatically improve efficiency and eliminate inaccuracies. Generate automated and accurate service reports.
- Complete Test Capture: Automatically record and capture all fire safety tests required for maintenance, ensuring flawless traceability.
- End User Alerts: The platform proactively alerts the end user when a test is required.
- Compliance Validation: Receive an alert if a test has not been performed correctly or completely, ensuring that every component of the system is always operational.
- Real-Time Data: Monitor all system data anywhere, anytime with instant push notifications.
- Localized Notifications: Benefit from instant event notifications combined with intuitive graphical maps for quick localization.
- Constant Compliance: Maintain compliance for all installed systems with automatic notifications and reminders.
- Harness the power of Artificial Intelligence (AI) to move from reactive maintenance to predictive maintenance and analysis.
- Advanced Detector Analysis: Our platform analyzes analog values, dust, and detector compensation, along with many other factors and our decades of experience.
- Save Time and Money: Predictive maintenance helps you reduce wasted time and money from unnecessary site visits and, most importantly, unconfirmed fire alarms.
- Remote Monitoring: In addition to technicians, the platform also allows end users to perform remote monitoring and checks, increasing awareness and safety.

Assure the owner that the system is always compliant with regulations, reducing operating costs and maximizing reliability.



> ONE2 Expansion card with 2 loops for TeledataOne Panel



Functional Features

With ONE2 you can extend the management capabilities of TeledataOne. ONE2 card has 2 supplementary loops, both have the same features of the master panel. The mounting is internal to the fire alarm panel.

Technical Features

- 2 loops
- Up to 4 One2 for one TeledataOne
- Certified device according to EN54-2
- Loop configurable as open or closed loop
- Maximum number of devices per loop: 240
- Internal mounting of the center by connector of the master board
- 2 programmable relay output of monitored alarm
- Multi - Protocol Teledata Apollo

> ONE56 LED board for alarm of zones for TeledataOne Panel



Functional Features

The LED board ONE56 can be placed below the display of TeledataOne, without modifying form and design. Thanks to this LED board you can have a light alarm signal of zones and will be possible to identify faster the number of active zones.

Technical Features

- Number of visualizable zones: 56
- Operating Temperature: -5 ° C/+ 40 ° C
- Dimensions: 219x58mm
- Red LED Color
- Powered directly by the panel

> ONE16 LED board for alarm of zones for OneMini Panel



Functional Features

The LED board One16 can be placed below the display of OneMini, without modifying form and design. Thanks to the LEDs you can have a light alarm signal of zones and will be possible to identify faster the number of active zones.

Technical Features

- Number of visualizable zones: 16
- Operating Temperature: -5 ° C/+ 40 ° C
- Red LED Color
- Powered directly by the panel

> ONEPW Auxiliary power supply for full configuration of TeledataOne



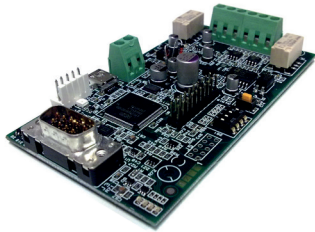
Functional Features

Auxiliary power supply for the TeledataOne, necessary if expansion cards or accessories are installed on the panel

Technical Features

- Power supply: 100 - 240VAC Input - 1.2A
- AC Current Typical: 0.32A / 230 VAC
- Frequency range: 50/60 Hz
- Output: 27,6 VDC - 2.3A
- Efficiency: 90%
- Power: 60W
- Short Circuit Protection: Hiccup mode, recovers automatically after fault condition is removed
- Over Voltage Protection: Shut down output voltage, re-power on to recover
- Operating Temperature: -5°C ~ +40°C
- Storage temperature/ Humidity -40° ~ +70°C, 10 - 95% RH
- Dimensions: 180x61x349mm
- Weight 0.73 Kg

> ONERING Card for ring networks between TeledataOne / OneMini Panels



Functional Features

With One Ring you can connect in a ring network up to 32 TeledataOne, so is possible to create a system that shares all informations of each single panel.

Technical Features

- CAN BUS Connection
- speed communication up to 50 Kbps
- High fault tolerant, able in the presence of network failure, to maintain the necessary information pass between the nodes
- Compatible with central Olympia - Teledata One
- Prepared for mounting inside the central Olympia/Teledata One
- Consumption 250mA max - 50mA nominal
- Current stand by: 33mA
- Current in alarm: 33mA
- 12 VDC power supply from the central Olympia
- 24 VDC power supply from the central TeledataOne

> CONVERTERSINGLE Single mode optical fiber converter with ST connector for ONERING

**on request*



- Power supply: 12 V - 35 V
- Insulation between the ports: CAN/Power supply 2.5KV
- Consumption: 2.8 W/VA
- Maximum distance 10 Km
- Data rate: 5 kHz to 1MHz
- Extend six independent networks in the same optical fiber;
- Different connection topologies (Point to point, Single ring);
- Possibility to transmit I/O over long distance;
- Integrated auto-diagnostic system;
- Possibility to extend the network over long distances;
- Interchangeable optical fiber connectors (different distances and different optical fiber tipologies);
- High speed communication;
- No voltage drop;
- Big Temperature Range (-40° C to +85° C);
- Total electric insulation
- Insulation between the ports: CAN/Power supply 2.5KV

> CONVERTERMULTI Multi mode optical fiber converter with ST connector for ONERING

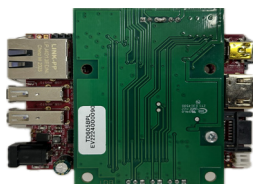
**on request*



- Power supply: 12 V - 35 V
- Insulation between the ports: CAN/Power supply 2.5KV
- Consumption: 2.8 W/VA
- Maximum distance 550 m
- Data rate: 5 kHz to 1MHz
- Extend six independent networks in the same optical fiber;
- Different connection topologies (Point to point, Single ring);
- Possibility to transmit I/O over long distance;
- Integrated auto-diagnostic system;
- Possibility to extend the network over long distances;
- Interchangeable optical fiber connectors (different distances and different optical fiber tipologies);
- High speed communication;
- No voltage drop;
- Big Temperature Range (-40° C to +85° C);
- Total electric insulation
- Insulation between the ports: CAN/Power supply 2.5KV



> ONECONNECT Network interface with WEB functionality for OneLive and Winwatch



Functional Features

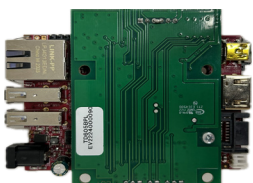
- ETHERNET / Serial converter
- Proprietary protocol

Basic functionality for centralization on Teledata supervision systems. Advanced functionality through which the device is able to connect the Teledata fire alarm control panels (TeledataONE, MiniONE) to the outside world through the REST protocols

Technical Features

- Embedded LINUX operating system
- ARM Cortex7 type CPU
- 512Mb RAM
- 8Gb flash memory
- 3W CPU consumption

> ONEMODBUS Network interface with WEB functionality for 3rd Party BMS Integration



Functional Features

- ETHERNET / Serial converter
- Modbus gateway

Basic functionality for centralization on Teledata supervision systems. Advanced functionality through which the device is able to connect the Teledata fire alarm control panels (TeledataONE, MiniONE) to the outside world through the REST protocols and Modbus

Technical Features

- Embedded LINUX operating system
- ARM CORTEX7 type CPU
- 512Mb RAM
- 8GB flash memory
- CPU consumption 3W

> FDSMART400 3G dialer EN54 21 certified



Technical Features

- 4G dialer with Touch screen integrated
- Multilanguage interface
- Available protocols Contact ID, SIA(1/3 livelli) e Fast format (scancom)
- SMS message system interface
- 4 Input and 4 relè outputs
- Certified EN54 21, EN50136-2, EN50131-1& EN50136-1 (grado 2 e 3)
- Power and consumption 9-28Vdc 151mA
- Working temperature -10C + 55 C
- Size 110x150 mm

> TD594 General solid state



Technical Features

- Solid state contact clean output
- Maximum current: 120 mA
- Maximum voltage: 100 V peak

> TD607 Nac Expander for TeledataOne Panel



Technical Features

- External Power Supply 5A
- Number of outputs 1
- Max Number of Sounders 148

> TD615 Nac Expander for TeledataOne Panel



Technical Features

- External Power Supply 5A (for each output)
- Number of outputs 4
- Max Number of Sounders 148

> **ONEPRINTER** Printer for ONE control panels



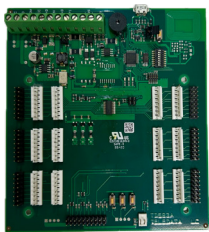
Functional Features

Serial printer in wall-mounted case, connectable to the TeledataOne and OneMini control panels

Technical Features

- Supply voltage: 24Vdc
- Thermal paper printing support
- Paper width: 58mm
- Roll diameter: 39mm
- Serial interface: RS232
- Size: 160x124x108mm

> **ONEMIMIC** Remote LED card



Functional Features

The ONEMIMIC module connects to the TeledataOne control panel via RS-485 bus. Provides information on the status of the fire detection system, both general and by areas status. It is equipped with 48 outputs for area LEDs, plus a serie of outputs for general fault indications. There is also a button to test the flashing of the LEDs. ONEMIMIC supports the activation of 4 LED blocks that can be set by DIP SWITCH as it must be able to manage up to 192 areas. ONEMIMIC is supplied in a wall-mounted case.

Technical Features

- Supply voltage: 24Vcc
- Transmission protocol: RS485
- Size: 243x138x45mm
- Pre-painted sheet 1 mm thickness metal case

> **ONEKBD** Remote Touch screen panel with iron case for TeledataOne and One Mini



Functional Features

Same as to the TeledataOne the OneKBD is easy and intuitive to use. All functions can be reached with a touch according to the different levels of access. It offers the possibility of events and historical display .

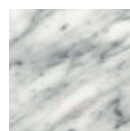
Technical Features

- graphical touch screen display (480x272 TFT 4.3 ")
- 14 front LED
- 2 line RS 485 for the connection
- Operating Temperature: - 5°C/+40°C
- Power supply: 27.6vdc
- Consumption: 90mA
- Talk Speed: 38400 bps
- Maximum number of ONEKBD that can be connected to a control center: 16
- Dimensions: 210x120x30 mm
- Weight: 1kg
- Level of protection: IP30

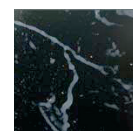
Custom Colors



MARBLE



CARRARA



BLACK

CUSTOM





> **ONEDETECTOR** Multi-Criteria Dual Optical and Thermal detector with short circuit isolator

Functional Features

The OneDetector Multi-Criteria Dual Optical and Thermal detector is the latest in smoke detector technology. The first ever detector approved with three standards EN54-5, EN54-7 and EN54-29. Part 29 is the new standard of Fire Detectors defining the requirements for multiple sensor detectors.

OneDetector ensures the analysis of the air condition and the temperature of the protected area, it has immunity to false alarms utilising the dual-path optical smoke detection technologies and algorithms designed for the EN54-29 for improved performance.

The 360° visible LED with three different colours signals a condition of alarm (red), fault (yellow) and localization (green).

Each detector is provided with an integrated isolator circuit, that automatically takes action. The address can be programmed by the touch-screen digital programmer ONEPROGRAMMER. It is provided with tools for base numbering and locking pin against unwanted removal to provide the highest level of safety and system reliability.

Technical Features

- Low profile thermal and thermovelocimetric smoke detector to be combined with ONEBASE
- Thermovelocimetric function at 58°C
- Thermal function at 78°C
- Built with multicolored plastic material, modern design.
- It can be programmed to operate at 58°C or 78°C
- Built with ABS plastic material with stabilized UV,
- Modern and compact design, low aesthetical impact
- Integrated self adapting function, to suit environmental changes
- Remote LED control option
- Power supply: 18 - 27V
- Stand by current consumption: 190 µA
- Alarm current consumption: 6 mA (LED on)
- Remote output max current: 15 mA
- IP40 degree of protection
- Operating temperature: -30°C - +70°C
- Max humidity: 95% non-condense
- Height: 48 mm with base
- Diameter: 92 mm
- Weight with base: 120 g



> **ONEDETECTOR1** Dual Optical detector with short circuit isolator

Functional Features

The OneDetector1 ensures an analysis of air condition and temperature of the protected area, and immunity to false alarms utilising the dual-path optical smoke detection technologies and algorithms for improved performance.

The 360° visible LED with three different colours signals a condition of alarm (red), fault (yellow) and localization (green).

Each detector is provided with an integrated isolator circuit, that automatically takes action. The address can be programmed by the touch-screen digital programmer ONEPROGRAMMER. It is provided with tools for base numbering and locking pin against unwanted removal to provide the highest level of safety and system reliability.

Technical Features

- Low profile optical smoke detector to be combined with ONEBASE
- Built with ABS plastic material with stabilized UV,
- Modern and compact design, low aesthetical impact
- Integrated self adapting function, to suit environmental changes
- Remote LED control option
- Power supply: 18 - 27V
- Average power consumption: 190 μ A
- Alarm current consumption: 6 mA (LED on)
- Remote output max current: 15 mA
- IP40 degree of protection
- Operating temperature: -30°C - +70°C
- Max humidity: 95% non-condense
- Height: 48mm with base
- Diameter: 92mm
- Weight with base: 120g



> **ONEDETECTOR2** Thermal and thermovelocimetric detector with short circuit isolator

Functional Features

The OneDetector2 ensures the analysis of the air temperature of the protected area and immunity to false alarms.

The 360° visible LED with three different colours signals a condition of alarm (red), fault (yellow) and localization (green).

Each detector is provided with an integrated isolator circuit, that automatically takes action. The address can be programmed by the touch-screen digital programmer ONEPROGRAMMER. It is provided with tools for base numbering and locking pin against unwanted removal to provide the highest level of safety and system reliability.

Technical Features

- Low profile thermal and thermovelocimetric smoke detector to be combined with ONEBASE
- Thermovelocimetric function at 58°C
- Thermal function at 78°C
- Built with multicolored plastic material, modern design.
- It can be programmed to operate at 58°C or 78°C
- Built with ABS plastic material with stabilized UV,
- Modern and compact design, low aesthetical impact
- Remote LED control option
- Power supply: 18 - 27V
- Average current consumption: 190 μ A
- Alarm current consumption: 6 mA (LED on)
- Remote output max current: 15 mA
- IP40 degree of protection
- Operating temperature: -30°C ~ +70°C
- Max humidity: 95% non-condense
- Height: 48 mm with base
- Diameter: 92 mm
- Weight with base: 120 g

> **ONEBASE** Base for ONEDETECTOR



Functional Features

Built with ABS plastic material with stabilized UV, modern design. It can be used for the mounting of any detector belonging to ONEDETECTOR series.

Technical Features

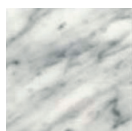
- Diameter: 92 mm
- Height: 16 mm
- Weight: 35 g
- Operating temperature: -30°C + 70°C
- Max. humidity: 95% non condensing
- Output for remote optical repeater



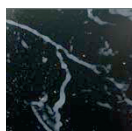
Custom Colors

> **COLORDETXX** Custom colors for OneDetectors **on request*

MARBLE

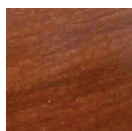


CARRARA



BLACK

WOOD

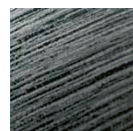


CHERRY

METAL



GOLD



ALLUMINIUM

CUSTOM



> **BOX700** Smoke detector housing for duct installation

Technical Features

- Material of container: thermoplastic
- Two PVC probes for detection of smoke



> ONECALLPOINT Addressable call point

Functional Features

Activation is signaled with a red led and glass break effect, the call point can be reset with the provided key. Each call point is provided with integrated short circuit isolator that automatically takes action in case of need.

The address can be programmed by means of the programmer. It is provided with tools for base numbering and locking pin against unwanted removal.

Technical Features

- Provided with integrated isolator circuit
- Red color led
- Flush-mounted installation tool included
- Power supply: 18 - 27V
- Average current consumption: 270 µA
- Alarm current consumption: 6mA (LED on)
- Operating temperature: -20°C ~ + 65°C
- Max. humidity: 95%
- Dimension: 87x87x54 mm
- Max. Cable cross section 2.5 mm

| Code | Description |
|--------------------------|-------------------------------------|
| ONECALLPOINT | addressable callpoint |
| ONECALLPOINTPLUS | addressable callpoint + plexy cover |
| ONECALLPOINTCOVER | plexy cover only |



> FDBBR Call point protective cover IP 55

Functional Features

FDBBR is a fully enclosed mounting box designed to give a great protection the call point

Technical Features

- Designed to enclose most EN 54-11 approved call points and emergency switches
- Greater protection from water and dust
- 2 knockouts for 20 mm conduit



> FDCTS04 Fire alarm callpoint sign



> ONEMICROM10

Input addressable module with short circuit isolator in Micro format

>ONEMICROM01

Output addressable module with short circuit isolator in Micro format

>ONEMICROM11

Input and output addressable modules with short circuit isolator in Micro format

Functional Features

Using these devices it is possible to interface the loop with different systems, or to activate, by means of output modules, any type of output (sounders, light signals, fire doors electromagnets, etc.).

Technical Features

- Monitored input able to detect different thresholds
- Average current consumption: 180 μ A
- Alarm current consumption: 6mA (LED on)
- Provided with integrated isolator circuit
- Max current output: 30mA*
- Operating temperature: -5°C - +40°C
- Max. humidity: 95% non condensing
- Max. Cable cross section 1.5 mm
- Power supply: 18 - 27V
- Dimensions: 42x27x15 mm
- Weight: 30g

*note: not for ONEMICROM10



> ONEMODULE300

3 input addressable module with short circuit isolator

> ONEMODULE310

3 input, 1 C form output addressable module with short circuit isolator

> ONEMODULE301

3 input and 1 monitored output addressable module with short circuit isolator

> ONEMODULE111

1 input, 1 C form output and 1 monitored output addressable with short circuit

> ONEMODULE120

1 input, 2 C form output addressable module with short circuit isolator

> ONEMODULE110

1 input, 1 C form output addressable module with short circuit isolator

> ONEMODULE100

1 input module with short circuit isolator

> ONEMODULE001

1 monitored output addressable module with short circuit isolator

Functional Features

Using these devices it is possible to interface the loop with different systems, or to activate, by means of output modules, any type of output (sounders, light signals, fire doors electromagnets, etc.).

Technical Features

- Monitored input able to detect different thresholds
- Average current consumption: 180 μ A
- Alarm current consumption: 6mA (LED on)
- Provided with integrated short circuit isolator
- Relay output: 1A*
- Operating temperature: -5°C ~ + 40°C
- Max. humidity: 95% non condensing
- Max. Cable cross section 2.5 mm
- Power supply: 18 ~ 27V
- Dimensions: 106x54x27 mm
- Weight: 100g

*not for ONEMODULE300



>**ONEMODULE420** Addressed module with 1 input 4-20mA 1 C from output



Functional Features

Through use of this device it is possible to interface to the LOOP devices with 4-20mA interface, both negative and positive reference type, it is also possible to pilot any type of siren, luminous plate, electromagnets, etc.
ONEMODULE420 is equipped with on-board short-circuit isolator.
The address is programmed via ONEPROGRAMMER.

Technical Features

- Power supply: 18 - 27V
- Relay output: 1 A
- Average current consumption 140 μ A
- Alarm current consumption: 6mA (LED on)
- Operation temperature: -5°C ~ +40°C
- Max humidity: 95% without condensation
- Cable max section: 2,5mm
- Size: 106x54x27mm
- Weight 100g

>**ONEMODULECNV** Addressed module for the management of conventional detectors, 1 conventional input, 1 Form C output



Functional Features

Through use of this device it is possible to interface to the LOOP with conventional type devices, it is also possible to pilot any type of siren, luminous plate, electromagnets, etc.
ONEMODULECNV is equipped with on-board short-circuit isolator.
The address is programmed via ONEPROGRAMMER.

Technical Features

- Power supply: 18 - 27V
- Average current consumption 140 μ A
- Alarm current consumption: 6mA (LED on)
- Operation temperature: -30°C ~ +70°C
- Max humidity: 95% without condensation
- Cable max section: 2,5mm
- Size: 106x54x27mm
- Weight 100g

>**ONEMODULE230** Addressed module 1 input, 1 high power load relay output



Functional Features

Through use of this device it is possible to interface to the LOOP with conventional type devices, it is also possible to pilot any type of siren, luminous plate, electromagnets, etc.
ONEMODULE230 is equipped with on-board short-circuit isolator.
The address is programmed via ONEPROGRAMMER.

Technical Features

- Power supply: 18 - 27V
- Average current consumption: 140 μ A
- Alarm current consumption: 6mA (LED on)
- Relay output: 1 Form C , 16A @ 250V
- Voltage output monitoring
- Operating temperature: -5°C ~ +40°C
- Max humidity: 95% without condensation
- Size: 90x64x32mm
- Din or wall mounting



> **ONESIREN** Low-power addressed flash siren EN54-3 and EN54-23 with short-circuit isolator



Functional Features

Teledata's latest generation addressed flash siren sets a new benchmark in terms of performance-to-power ratio. This device offers top sound and light output with a power consumption that places it among the most efficient products available on the market.

Main Features:

- Low Consumption: Competitive advantage in terms of system efficiency.
- Loop powered
- Intuitive NFC Programming: Fast and effortless configuration and maintenance.
- Functional Versions: Choose between full Flash+Sound or Flash only version
- Flexible Design: Available for surface mounting (wall or ceiling) and a specific flush-mounted version
- Maximum Operational Flexibility: The device is fully customisable to operate in any context.

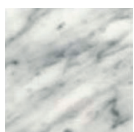
WALL & CEILING



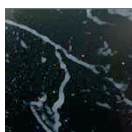
FLUSH MOUNTED



MARBLE

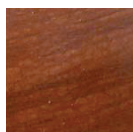


CARRARA



BLACK

WOOD

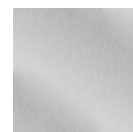


CHERRY

METAL



GOLD



ALLUMINIUM

CUSTOM





> **ONESIREN** Low-power EN54-3 addressed siren with short-circuit isolator



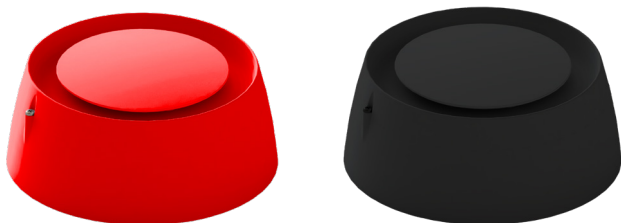
Functional Features:

Teledata's latest-generation addressable siren sets a new benchmark in terms of performance-to-power ratio. This device offers top sound and light output with a power consumption that places it among the most efficient products available on the market.

Main Features:

- Low Consumption: Competitive advantage in terms of system efficiency.
- Loop powered
- Intuitive NFC Programming: Fast and effortless configuration and maintenance.
- Flexible Design: Available for surface mounting (wall or ceiling) and a specific flush-mounted version
- Maximum Operational Flexibility: The device is fully customisable to operate in any context.

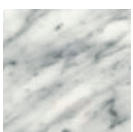
WALL & CEILING



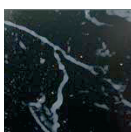
FLUSH MOUNTED



MARBLE

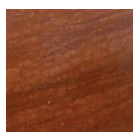


CARRARA



BLACK

WOOD



CHERRY

METAL



GOLD



ALLUMINIUM

CUSTOM

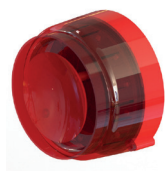




> **SOUND100** Addressable siren EN54-3 with short-circuit isolator

Functional Features

The volume of the acoustic emission can be adjusted by manually operating the siren itself. During activation, groups of sirens can be synchronised.



> **SOUND101** Addressable siren with flashing light EN54-3 and short-circuit isolator

Functional Features

The volume of acoustic emission and flashing are adjustable by manually acting on the siren itself. During activation groups of sirens can be synchronized.



> **SOUND110** Addressable siren with flashing light EN54-3 and 23 and short-circuit isolator

Functional Features

The volume of acoustic emission and flashing are adjustable by manually acting on the siren itself. During activation groups of sirens can be synchronized.



> **SOUND330** Addressable siren with flashing light EN54-3 and 23 and remotely controllable short-circuit isolator (UNI 11744)

Functional Features

The alarm or pre-alarm tone of the siren is remotely controllable and can be silenced if necessary, leaving the flashing itself active. During activation groups of sirens can be synchronized.

| Item | SOUND100 | SOUND101 | SOUND110 | SOUND330 |
|---------------------------|--|-----------------------------|-------------------------------------|-------------------------------------|
| Type | Addressable sounder | Addressable sounder + flash | Addressable sounder + flash EN54-23 | Addressable sounder + flash EN54-23 |
| Compliance | EN54-3, EN54-17 | EN54-3, EN54-17 | EN54-3, EN54-17, EN54-23 | EN54-3, EN54-17, EN54-23, UNI11744 |
| Power supply voltage | 18 ~ 27V | 18 ~ 27V | 18 ~ 27V | 18 ~ 27V |
| Standby power consumption | 130µA | 130µA | 230µA | 260µA |
| Consumption in alarm mode | 20mA | 27mA | 35mA | 26mA |
| Power consumption | 0,2W | 0,6W | 1,45W | 1,45W |
| Coverage | | | W-2,4-5 | W-2,4-5 |
| Dimensions | D:100 mm H:92 mm | D:100 mm H:92 mm | D:100 mm H:107 mm | D:100 mm H:107 mm |
| Siren voltage ON | 24 V dc | 24 V dc | 24 V dc | 24 V dc |
| Sound output | 107 dB | 107 dB | 97 dB | 97 dB |
| Certification body | APPLUS | | | |
| Protocol | ONEPROTOCOL | | | |
| Operating temperature | -10 °C ~ +55 °C | | | |
| Humidity | 85% RH (without condensation) | | | |
| Maximum cable section | 2,5 mm | | | |
| IP Grade | IP65 (with PG7 grommets installed in the base) | | | |



> **ONEBASES** Base sounder **OneDetector not included*

Functional Features

Virtual addressing.
Wide input voltage range from 16 to 40 Vdc available in a standard 32-tone version with locally controllable output levels. Extremely low profile, protrudes only 28 mm from the wall, it is very acoustically-effective, it produces an omnidirectional audio output with low current levels.

Technical Features

- Consumption: 3mA
- 4 volume levels
- 32 main tones + 32 alternatives
- Sound power up to 92dB



> **ONEBASELPG** Base sounder with flashing light **OneDetector not included*

Functional Features

Virtual addressing.
Ideal for applications where an acoustic and visual alarm device is required. With low power consumption it combines a high-performance LED, specifically designed and approved to meet EN54-23

Technical Features

- Consumption white LED:
 - high intensity 20mA
 - low intensity 12mA
- Consumption red LED:
 - high intensity 18mA
 - low intensity 10mA
- Optical coverage white LED:
 - high intensity C3-15
 - low intensity C3-9
- Optical coverage red LED:
 - high intensity C3-10
 - low intensity open class
- 4 volume levels
- 32 main tones + 32 alternatives
- Sound power up to 92dB
- Synchronized flashes



> **ONEBASELPGAD** Base sounder with flashing light **OneDetector not included*

Functional Features

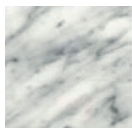
Physical addressing.
Ideal for applications where an acoustic and visual alarm device is required. With low power consumption it combines a high-performance LED, specifically designed and approved to meet EN54-23

Technical Features

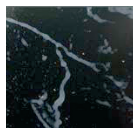
- Consumption white LED:
 - high intensity 20mA
 - low intensity 12mA
- Consumption red LED:
 - high intensity 18mA
 - low intensity 10mA
- Optical coverage white LED:
 - high intensity C3-15
 - low intensity C3-9
- Optical coverage red LED:
 - high intensity C3-10
 - low intensity open class
- 4 volume levels
- 32 main tones + 32 alternatives
- Sound power up to 92dB
- Synchronized flashes

> **COLORBASEXX** Customization for base sounder series One **on request*

MARBLE



CARRARA



BLACK

WOOD



CHERRY

METAL



GOLD



ALLUMINIUM

CUSTOM





> **ONEPROGRAMMER** Programmer for addresses for devices in the OneProtocol

Functional Features

The ONEPROGRAMMER is a programming unit that allows to program and read the parameters stored in the analogue fire detection devices via a practical touch-screen display

Technical Features

- Reading and setting analogue address on a device.
- Reading of analogue and dirt values
- Reading the firmware version of the devices
- 2 rechargeable batteries
- Temperature range: from -30°C - +70°C
- Maximum humidity: 95% RH (in the absence of condensation)
- Size: 110x210x40,5mm ABS black
- Power supply: 12Vcc
- Power supply: 12Vdc 3 ° supplied



> DEMOKIT TeledataOne wired demo kit

Features

Wired devices inside the TeledataOne DemoKit:

- TeledataOne
- OneDetector
- OneDetector + OneBaseLPG
- OneMicrom
- OneModule
- Sound110
- OneCallPointPlus



> FDTWT Addressable wireless transceiver and protocol converter

Taurus Series

Functional & Technical Features

The FDTWT Wireless Translator Module is the core component of the Taurus intelligent hybrid fire detection and alarm system. When connected on to a compatible loop, the unit is capable of linking up to 128 fully intelligent wireless field devices with the fire alarm system. All wireless communications rely on a channel pair for spurious RF noise rejection and maximum link reliability. The translator allows fully intelligent and seamless integration of the wireless devices alongside standard wired devices or can be used independently to form completely wireless systems.



- Loop powered or via external power supply unit
- Bi-directional wireless communication
- Compatible with up to 8 layers/15 expander modules
- Mesh expander technology programmable for redundant path to the translator
- Low current consumption
- Internal antennae design protects from environmental conditions, vandalism, accidental damage or misuse
- Long communication range (1 km in open air)
- 8 pairs of network channels
- Dual channel redundancy
- Full analogue data availability (eg optical and thermal value, link quality, battery status, chamber drift compensation status)
- Site programmable via local keypad, or via wireless or wired PC connection
- 3rd party approval to EN54-17, EN54-18 and EN54-25
- Loop power supply range 18Vdc - 40Vdc
- Operating frequency range: 868 - 870 MHz
- Max radiated power: 14dBm (25mW)
- IP rating 65
- Operating temperature: -10 to +55 ° C
- Humidity: 90%
- Typical current consumption: 16mA (@12Vdc)
- Dimensions: 235 x 160 x 70mm
- Weight: 700g



> FDTWE Expander radio

Taurus Series

Functional & Technical Features

The FDTWE Expander Module is compatible with all Taurus Wireless intelligent translators and the conventional expander. The unit provides a convenient method to increase radio communication range beyond that possible from a single translator by relaying the radio communication to further expanders or directly to the wireless field devices, allowing to build large fully wireless systems or add wireless devices into areas where cabling for translators is difficult or impossible. The expanders are programmable for redundant path to the translator, so that if any expander in the chain fails, the transmission path can find an alternate route. devices alongside standard wired devices or can be used independently to form completely wireless systems.

- Compatible with all intelligent and conventional translators
- Bi-directional wireless communication
- 8 pairs of network channels
- Dual channel and dual path redundancy
- Long communication range (1 km in open air)
- 3rd party Approval to EN54-18 and EN54-25
- Operating frequency range: 868 - 870 MHz
- Power supply range: 9Vdc - 30Vdc
- Typical current consumption: 24mA (@12Vdc)
- Max radiated power 14dBm (25mW)
- IP rating 65
- Temperature range -10°C to +55°C
- Max humidity (non condensing) 90% RH
- Weight (without batteries) 700 g
- Dimensions 235 mm x 160 mm x 70 mm



Taurus Series

> **STW1000** Wireless Smoke detector EN54-7 & 25

Functional & Technical Features

STW1000 wireless dual optical smoke detector is the latest in wireless smoke detector technology. The detector utilises dual optical smoke detection technologies and algorithms for improved performance, and maintaining the highest levels of false alarm rejection. Utilising well-proven adaptive radio signal processing algorithms it ensures the highest levels of life safety and system reliability are achieved. In-built magnet test allows easy activation to verify correct functionality and response.



- Operating frequency range: 868 - 870 MHz
- Max radiated power: 14dBm (25mW)
- Dimensions: 110mm x 70mm
- Weight (without batteries): 155 g
- Batteries: 2x CR123A
- Operating Temperature -10°C to +55°C
- Max humidity (non condensing): 95% RH
- IP rating: 40

> **STW3500** Wireless Heat detector EN54-5 & 25

Functional & Technical Features

The SWT3500 wireless heat detector is the latest in wireless heat detector technology. The detector is a fully intelligent device designed to give the best possible warning of a fire condition in locations where smoke detection technology is not suitable. The device is capable of being configured as either a high temperature or rate of rise device type. The well-proven adaptive radio signal processing algorithms ensure the highest levels of life safety and system reliability are achieved. An in-built magnet test allows easy activation to verify correct functionality and response.

- Class A1R (58°C max) or Class BS high temp (78°C)

> **STW2000** Wireless Multi-criteria detector EN54-5, 7 & 25

Functional & Technical Features

The STW2000 Taurus wireless multi-criteria detector is the latest in wireless multi-criteria detector technology. The detector is a fully intelligent device combining both smoke and heat detection technologies for improved performance, whilst maintaining high levels of unwanted alarm rejection. Utilising well-proven adaptive radio signal processing algorithms ensure the highest levels of life safety and system reliability are achieved. An in-built magnet test allows easy activation to verify correct functionality and response.

- Advanced dual optical chamber design
- Thermal part Category A1R approved



> FDTWMIS Wireless input mini module

Taurus Series

Functional & Technical Features

The FDTWMIS Taurus Wireless Input Module has a single fully monitored input circuit which allows simple integration of third party equipment with the fire system. The unit is fully compatible with all Taurus Translator and Expander modules and the adaptive radio signal processing algorithms ensure the highest levels of life safety and system reliability.



- Bi-directional wireless communication
- Input circuits are fully supervised for alarm and fault conditions (utilizing eol resistors)
- 22 pairs of field channels
- Dual channel redundancy
- Long communication range (1 km in open air)
- 10 year battery life
- Utilises dual low cost lithium battery
- Easy scan & link programming option
- 3rd party approval to EN54-25 & EN54-18

> FDTWMU Wireless out put relay module

Taurus Series

Functional & Technical Features

The FDTWMU has been designed to allow easy control of a variety of third party equipment including access control doors, ventilation plant and fire extinguishing systems. The unit is powered entirely from its internal battery supply and is fitted as standard with both a set of change over relay contacts and a 12/24V dc output. The output is capable of supplying power for operating low current third party equipment directly from the internal batteries.



- Bi directional wireless communication
- Output circuits are fully supervised for fault conditions (utilizing EOL resistors)
- Can be used with Taurus addressable and conventional translators
- Change over relay and 12/24V output functionality
- On site programmable
- 22 pairs of field channels
- Long communication range (1 km in open air)
- Dual channel redundancy
- 5 year expected battery life (application dependent)
- Utilises dual low cost lithium battery
- Easy scan & link programming option
- 3rd party approval to EN54-18 and EN54-25

> FDTWCP Wireless callpoint

Taurus Series

Functional & Technical Features

The FDTWCP is a fully intelligent device which is compatible with all Taurus Series Translator and Expander Modules. The unit has a resettable plastic element, which displays a drop down warning indicator when operated. A key is supplied with the MCP for reset and case opening. The product is powered by two lithium CR123A batteries with a typical life of 10 years. A transparent cover protects against accidental operation, whilst a weatherproof enclosure is available for use outdoors or in hostile environments.



- Bi-directional wireless communication
- Can be used with Taurus addressable and conventional translators
- 22 pairs of field channels
- Dual channel redundancy
- Long communication range (1 km in open air)
- 10 year battery life
- Utilises standard low-cost lithium battery technology
- Resettable element
- Easy scan & link programming option
- 3rd party approval to EN54-11 & EN54-25



> **FDCWS100 Sounder EN54-3**

Taurus Series



Functional & Technical Features

Conventional sounder wall mounting modular and flexible design, easy to install.

- Conventional sounder wall mounting modular and flexible design, easy to install
- Wireless with the optional module FDTWMS
- Power supply voltage range 18Vdc - 40Vdc
- Activated current load (High Vol.) 11-25 mA at 24 Vdc
- Acoustic Frequency range 400-2900 Hz
- Maximum acoustic Output 100 dB(A) @ 1m
- Operating temperature range -25°C to +70°C
- Unit weight (inc Back box) 290g
- Max tolerated humidity 95% RH
- Waterproof
- IP Rating: (non condensing) IP65

> **FDCWS100AV Sounder with flash EN54-3 and 23**

Taurus Series



Functional & Technical Features

Conventional sounder wall mounting modular and flexible design, easy to install. Possibility to mute the sounder and use only as flash indicator.

- Wireless with the optional module FDTWMS
- Power supply voltage range 18Vdc - 40Vdc
- Activated current load (High Vol.) 11-25 mA at 24 Vdc
- Acoustic Frequency range 400-2900 Hz
- Maximum acoustic Output 100 dB(A) @ 1m
- Operating temperature range -25°C to +70°C
- Unit weight (inc Back box) 290g
- Max tolerated humidity 95% RH
- Waterproof
- IP Rating: (non condensing) IP65

> **FDTWMS Wireless module for FDCWS100 & FDCWS100AV sounders** *Taurus Series*



Functional & Technical Features

The Taurus wireless system interface module is designed for use with the Taurus range of modular wall sounders and beacons.

- Operating frequency range: 868.15 Mhz-869.85Mhz
- Max radiated power: 5dBm(3mW)
- Radio signal modulation type: FSK
- Operating frequency channels: 7
- Communication range with the translator or the expander: < 150m (open air)
- Primary and secondary power cell: CR123A (3 V & 1.2 Ah)
- Primary and secondary power cell lifespan: 5 years / 2 months



> FDTWBS Wireless sounder base

Taurus Series

Functional & Technical Features

The FDTWBS Base Sounder unit is a high performance wireless sounder base that can be used as stand-alone notification device (with a blanking cap) or as a combined detection and alarm device when fitted with an integral Taurus Series optical, heat or multi detector



- Only compatible with Taurus detectors
- 32 tones settings (primary and secondary for alert and evacuation), selectable via onboard dip switches
- 4 volume levels
- Bi-directional wireless communication
- Can be used with Taurus addressable and conventional translators
- 22 pairs of field channels
- Long communication range (1 km in open air)
- Dual channel redundancy
- 5 year battery life (including 10 seconds weekly test)
- Utilises standard low-cost lithium battery technology
- Device identification tab
- Easy scan & link programming option
- Security screw to prevent tampering and unwanted removal
- 3rd party approval to EN54-3 and EN54-25

> FDTWBSLR Wireless sounder base with flash (Red LED)

Taurus Series

Functional & Technical Features

The FDTWBSLR Taurus Wireless VAD and sounder Base is a high performance wireless device, incorporating an EN 54-23 compliant VAD used to alert people in the event of a fire. Each device has an integral moulded base for mounting a Taurus wireless detector or a sounder blanking cap if a detector is not required.



- Only compatible with Taurus detectors
- 32 tones settings (primary and secondary for alert and evacuation), selectable via onboard dip switches
- 4 volume levels
- Bi-directional wireless communications
- Can be used with Taurus addressable and conventional translators
- 22 pairs of field channels
- Dual channel redundancy
- Long communication range (1 km in open air)
- 5 year battery life (including weekly test)
- Utilises standard low-cost lithium battery technology
- Easy scan & link programming option
- Security screw to prevent tampering and unwanted removal
- 3rd party approval to EN54-3, EN54-23 and EN54-25

> FDTWBSLW Wireless sounder base with flash (white LED)

Taurus Series

Functional & Technical Features

The FDTWBSLW Taurus Wireless VAD and sounder Base is a high performance wireless device, incorporating an EN 54-23 compliant VAD used to alert people in the event of a fire. Each device has an integral moulded base for mounting a Taurus wireless detector or a sounder blanking cap if a detector is not required.



- Only compatible with Taurus detectors
- 32 tones settings (primary and secondary for alert and evacuation), selectable via onboard dip switches
- 4 volume levels
- Bi-directional wireless communications
- Can be used with Taurus addressable and conventional translators
- 22 pairs of field channels
- Dual channel redundancy
- Long communication range (1 km in open air)
- 5 year battery life (including weekly test)
- Utilises standard low-cost lithium battery technology
- Easy scan & link programming option
- Security screw to prevent tampering and unwanted removal
- 3rd party approval to EN54-3, EN54-23 and EN54-25

> **FDTWIR** Wireless input mini module

Taurus Series



Functional & Technical Features

FDTWIR is a low profile unit with a large red LED panel, which can be used to indicate a variety of events or alarms on the fire system. The device is ideal for indicating the activation of a detector which is located where visual alarm confirmation is difficult, such as a lift shaft, ceiling void or locked room. Indication of the operation of other part of the fire system is also possible

- Operating frequency range: 868 – 870 MHz
- Max radiated power: 14 dBm (25mW)
- Batteries lifespan: 5 years
- Max humidity: 95% RH
- Operating temperature: -10°C to 50°C
- Weight without batteries: 60g
- Dimensions: 80x80x32 mm

> **FDWD100** Wireless electromagnetic lock

Taurus Series



Functional & Technical Features

The FDWD100 wireless electromagnetic lock is compatible with Teledata radio receivers FDTWT and radio expansions FDTWE. The radio signal processing algorithms combined with the latest magnet technology guarantees the highest level of safety and reliability.

- Frequency range: 868-870MHz
- Max. Radio power: 14dBm(25mW)
- Channels number: 7
- Communication range: <200m (in open air)
- Size: 90x135x54mm
- Batteries: 2xCR123
- Weight: 740g
- Temperature: -10°C ~ +55°C
- Max humidity: 95%RH
- Degree of protection IP30
- Magnet Force: 200N
- Batteries average duration: 5 years

> **FDTWDONGLE** Wireless connect dongle

Taurus Series



Functional & Technical Features

The dongle device allows the user to wirelessly connect the PC to the translator for system management purposes (commissioning, debugging and diagnostic). The device is compact and easily portable, it fits the pocket. The device is powered by usb cable once connected to the pc or by the two onboard batteries.

- Bi-directional wireless communication to Taurus infrastructure
- Can be used with Taurus addressable and conventional translators
- Communication range up to 200 m in open air
- Utilises standard low-cost alkaline AA battery technology

> **FDTWKIT** Wireless survey kit **on request*

Taurus Series



Functional & Technical Features

The survey kit is a diagnostic system that is used to test the wireless channels or frequency bands that are used, in general, by Taurus systems.

The aim of the test is to determine the degree of reliability of the various channels, select the less congested ones and use those for building up the Taurus wireless system in the installation phase.



> FD9002L Conventional fire alarm panel 2 zones

Technical Features

- Maximum number of fire detectors in a line/zone 32
- Control of the lines and controllable outputs for fault conditions (short circuit and interruption) and automatic reset ;
- Built-in sounder in case of fire – monotonal , continuous with the possibility of exclusion;
- Ability to Disable each of the fire alarm lines ;
- N°1 Independent relay output in case of fire alarm 3A/125V AC, 3A/30V DC
- N°2 Controllable output in case of fire alarm:(19-28)VDC/ 0,5A
- N°1 Independent relay output in case of failure: 3A/125V AC, 3A/30V DC
- Battery 5Ah Power supply 220Vac 65Watt
- Weight 1,25 Kgm

> FD9004L Conventional fire alarm panel 4 zones

Technical Features

- Same features of FD9002L but with 4 zones

> FD9008L Conventional fire alarm panel 8 zones

Technical Features

- Same features of FD9002L but with 8 zones

> FD9004 Conventional fire alarm panel 4 zones

Technical Features

- Same features of FD9002L but with 4 zones

> FD9008 Conventional fire alarm panel 8 zones

Technical Features

- Same features of FD9002L but with 8 zones

> FDTWTC Wireless conventional module

Taurus Series

Functional & Technical Features

The FDTWTC Conventional Expander Module with display has been designed to allow the integration of wireless detection and alarm type field devices onto almost any type of system. Regardless of whether the system is intelligent or conventional the unit can be simply connected to a conventional zone and sounder circuit, directly or via loop modules. The device includes a display compliant with UNI 9795, to visualise alarms and faults.



- Bi-directional wireless communication
- External PSU powered
- Internal antennae design protects from environmental conditions, vandalism, accidental damage or misuse
- Low current consumption
- Devices are fully monitored for alarm and fault
- Compatible with up to 15 expander modules (8 hops)
- Compatible with wide range of conventional and addressable systems
- Site programmable via internal keypad, or via wireless or wired PC connection
- 8 pairs of network channels
- Dual channel redundancy
- Long communication range (1 km in open air)
- Easy scan & link programming option
- 3rd party approval to EN54-18 and EN54-25
- 5 year product warranty



> **SF109** Conventional Smoke detector

Functional Features

Low profile detector to match conventional analogue BSE109 base , made of plastic material and with a modern design.

Technical Features

- Certification : EN54 part 7
- Power supply 10-30VDC
- current consumption in standby 130uA @ 24V
- Maximum current consumption in alarm 20mA
- Operating temperature 10°C ~ +50 °C
- Relative humidity 95 % RH
- IP Rating 40
- Diameter : 100mm ; Height : 54mm ; Weight : 100g (with base)

> **SF209** Conventional Heat detector

Technical Features

- Certification : EN54 part 7
- High threshold of temperature for alarm 58°C

> **SF309** Conventional rate of rise detector

Technical Features

- Certification : EN54 part 5
- High threshold of temperature for alarm 58°C



> **SF409** Conventional multicriterial detector

Technical Features

- Certification : EN54 parts 5 & 7
- Threshold of temperature for alarm 58°C



> **BS109** Conventional base for SFxx9 detectors

Technical Features

- Available with relay for FDCP109
- Maximum wire diameter 2.5 mm²
- Dimension diameter: 100 mm height: 15 mm



> FDCP109 Conventional fire button

Functional Features

FDCP109 is designed for internal use in fire protection systems and meets the requirements of the European standard EN54-11.

Technical Features

- Power Supply (9-30 V DC)
- Resistance 500 ff
- Current at 24v 48mA
- Red Led indicator
- Transparent protective cover
- Connection cables 0,4 mm2
- Operating temperature range -10°C ~ +50°C
- Humidity 95%RH
- Degree of protection IP40
- Size (90 x 90 x 44) mm
- Weight 0,120 kg
- ABS Plastic Material

> FD4991 Call point resettable



Technical Features

- EN54-11 : 2001 + A1 : 2005
- CPD Certificate
- restorable version with breaking glass effect
- Operating test with key supplied
- Degree of protection IP 66
- Connection Type : 6 terminals (3 double terminals for derivation)
- Maximum contact current 3A
- Operating temperature -20°C ~ + 65 ° C
- Humidity 95 % RH
- 87x87x23 mm
- Weight 320g



> FDES100 Conventional Siren En54-3

Technical Features

- (9-30)V
- 96dB/24V
- Led Flash, with the included base with lock.

> FDES101 EN54 3 certified IP65 conventional sounder



Functional Features

The FDES101 conventional siren with a neat design enriches the range of conventional Teledata devices Maximum performance managed by a microprocessor, 4 different tones, deep and lockable base on the siren body, fire-resistant case.

Technical Features

- Rated supply voltage 24Vdc
- Alarm consumption @ 24Vdc <10.6mA
- Sound power 98dB
- Number of programmable tones 4
- Frequencies 600Hz-2800Hz
- Humidity 5% - 95%
- Operating temperature -10°C a +55°C
- Case material red ABS
- Protection class IP65
- Certification EN54-3



> **FDESF101** EN54-3 certified IP65 conventional siren with flashing light



Functional Features

The FDESF101 conventional siren with a neat design enriches the range of conventional Teledata devices. Maximum performance managed by a microprocessor, 12 LEDs for excellent performance, 4 different shades, 0.5Hz and 1Hz option, deep base lockable on the siren body, fire-resistant case.

Technical Features

- Rated supply voltage 24VDC
- Alarm consumption @ 24VDC <30,1mA
- Sound power 98dB
- Number of programmable tones 4
- Frequencies 600Hz-2800Hz
- Flashing light frequency 1Hz
- Flashing light colour: red
- Humidity 5% - 95%
- Operating temperature -10°C ~ +55°C
- Case material red ABS
- Protection class IP65
- Certification EN54

> **FDEF102** Red flashing light EN54-3 and 23 certified IP65



Functional Features

The FDEF102 conventional siren with a neat design enriches the range of conventional Teledata devices. Maximum performance managed by microprocessor, high power LEDs, 32 different shades, 0.5Hz and 1Hz option, deep base lockable on the siren body, fire-resistant case.

Technical Features

- Rated supply voltage 24VDC
- Alarm consumption @ 24VDC 0,5Hz <20mA
- Alarm consumption @ 24VDC 1Hz <40mA
- Coverage: w- 2,4-7,5 (13,5m)
- Flashing frequencies 0.5Hz-1Hz
- Humidity 5% - 95%
- Operating temperature -10°C ~ +55°C
- Case material red ABS
- Protection class IP65
- Certification EN54-3

> **FDESF102** EN54-3 and 23 certified IP65 conventional siren with flashing light



Functional Features

The FDESF102 conventional siren with a neat design enriches the range of conventional Teledata devices. Maximum performance managed by microprocessor, high power LEDs, 32 different shades, 3 settable volume levels, 0.5Hz and 1Hz option, deep base lockable on the siren body, fire-resistant case.

Technical Features

- Rated supply voltage 24VDC
- Alarm consumption @24VDC 0,5Hz <37,7mA
- Alarm consumption @24VDC 1Hz <61,3mA
- Sound power 98dB
- Number of programmable tones 32
- Frequencies 440Hz-2900Hz
- Flashing light frequency 0,5Hz or 1Hz
- Flashing light colour: red
- Coverage w-2,4-7,5(13,5m)
- Humidity 5% - 95%
- Operating temperature -10°C - +55°C
- Case material red ABS
- Protection class IP65
- Certification EN54-3 EN54-23



> **FDESF500** EN54-3 and 23 certified conventional siren with flashing light



Functional Features

Energy-efficient conventional sounder with flashing light, IP65, synchronized flashing

Technical Features

- Rated supply voltage: from 10VDC to 60VDC
- Alarm consumption:
 - 8 mA (low volume, low coverage)
 - 14 mA (low volume, high coverage)
- Sound power:
 - 98 dbA (low)
 - 105 dbA (high)
- Number of programmable tones 32
- Flashing light frequency 0,5Hz or 1Hz
- Optical coverage:
 - High W 3-8,8
 - Low W 2,4-7
- Humidity: up to 95%
- Operating temperature -10°C ~ +55°C
- Case material red ABS
- Protection class IP65
- Certification EN54-3 EN54-23

> **FD5216** Indoors fire alarm bell



Functional Features

Indoors red steel fire alarm bell

Technical Features

- Red steel material
- Power supply and consumption: 24 VCC 25 mA 20/28 VCC
- Sound power: 93/95 dB
- Dimension: 152mm x 60mm
- Weight: 0.85 kg
- Operating temperature: -10°C ~ +55°C
- Protection class IP65

> **FD5060** Outdoors fire alarm bell



Functional Features

Energy-efficient outdoors fire alarm bell with integrated short circuit isolator.

Technical Features

- Red steel material
- Power supply: 24 VCC
- Current consumption: 25/35 mA
- Sound power: 95 dB (1 mt)
- Operating temperature: -10°C ~ +55°C
- Weight: 1.1 kg
- UNI EN54-3: 2000+A1:2002



> FDF24 Self-powered outdoor conventional sounder with flashing light EN54-3

Functional Features

Self-powered outdoor conventional sounder with flashing light. It is equipped with voltage regulator to recharge the battery at 12 Vdc.

FDF24 is able to execute a permanent test-report through the out test exit.

Technical Features

- Power supply: 24VDC
- Backup battery: 12VDC 2,1Ah Pb
- Max current: 0,5A
- Sound power: 102db (1 m)
- Frequency: 1000Hz / 1700Hz
- Anomaly: 1red LED and 'OUT TEST' exit
- Protection class: IP33C
- Operating temperature: -25°C ~ +70 °C
- Dimensions: 322 x 215 x 105 mm
- Weight: 2370g
- Certification of compliance: 0051-CPD-0157
- Certification: EN45-3 : 2000+A1 : 2002

> FDF25 Outdoor conventional sounder EN54-3



Functional Features

Energy-efficient outdoors sounder, sound can be synchronized between indoors and outdoors sounders.

Technical Features

- Power supply: 24VDC
- Max consumption: from 100 mA - 400mA
- Max sound power: 108,76 db(A) (1m)
- Frequency: 500Hz / 1200Hz
- Anomalia: led rosso e uscita 'OUT TEST'
- Class protection: IP33C
- Dimensions: 335 x 220 x 85 mm
- Operating temperature: -25°C ~ +70 °C
- Weight: 1798 g
- Cerification EN54-3



> FD5969 Acoustic optical plate certified EN54-3, IP54

Functional Features

FD5969 is an acoustic optical signalling panel suitable for any risk situation such as fires, flooding, gas leaks, etc. where acoustic signals are required. EN54 3 and visual signalling (VID).

Technical Features

- Nominal voltage: 24VDC (min18Vdc., max 30Vdc.)
- Line absorption at 24V: 21mA
- Degree of protection IP21C
- Material flammability: V2
- Sound pressure (max, 90 ° V. plane): > 90db (A) @ 1m
- Buzzer frequency: 2,8KHz
- Pulsating sound frequency: 1Hz
- Compliant to: EN54-3:2001+A1:2002+A2:2006
- Size: 292x130x55mm (LxHxP)
- Operating temperature: -10°C ~ +55°C
- Class: TYPE A



> FD5970 Audio visual fire alarm plate EN54 3 and 54 23

Functional Features

The device is an audio/visual warning panel, available in different models and suited for any emergency situation such as fire, flooding, gas leaks, etc., where visual and audio information is needed. Its special design, very pleasant and reduced thickness makes it particularly suited for public places where security is required in addition to elegance.

Technical Features

- Power supply: 18VDC - 30VDC (Nominal Voltage: 24V d.c.)
- Absorption: 50mA
- Installation: Wall mount
- Max mounting height for to secure visibility: 4,6m
- Type of connection: Clamp
- Flash light color: White
- Flashing frequency 1Hz
- Sound power (min): 79 dB(A) @ 1m, 18V d.c. (max) 92,3 dB(A) @ 1m
- Sound model pulsed, (500ms on, 500ms off)
- Silence-able Buzzer
- Buzzer frequency: 2,8Khz
- Operating temperature: From -10°C ~ +55°C
- Material: ABS
- Dimensions with backbox: 292x130x55mm (W x H x D)
- Compliant with EN54-23 W-4,6-9,1 and O-4,6-9,1-9,9. Syncro compliant with EN54-3:2001 + A1:2002 + A2:2006
- Protection Class IP21C*



> **FDPLEX2** Fire alarm plate

Technical features

- Print: UV ink
- Material: acrylic glass
- Dimensions: 230 x 130 x 4 mm
- Weight 130g



> **ONESOUNDPLEX** Fire alarm plate with hole for sounder

Technical features

- Print: UV ink
- Material: acrylic glass
- Dimensions: 340 x 137 x 4 mm
- Weight 135g



> FDFI100 LED alarm repeater



Technical Features

- The repeater is connected directly to the LED terminal repeat of the sensor .
- For wall mounting or ceiling
- Material: ABS
- Consumption : 4.5 mA @ 24 VDC
- Operating Temperature : -30 ° C / + 70 ° C
- IP Rating : 40
- Dimensions : 80x80x27
- Weight 30g
- Product promoted and available only out of Europe

> FDFI200 LED alarm floor repeater



Funcional features

LED flushed floor alarm repeater

Technical features

- Power supply: from 3 - 30 VDC
- Max. consumption: 10 mA
- Different colors of LED available: white, green, blue and yellow)

Available versions



FDFI200W



FDFI200CH



FDFI200G



FDFI200B



FDFI200

> FDFI300E LED alarm floor repeater



Funcional features

LED flushed floor alarm repeater

Technical features

- Power supply: from 3 - 24 VDC
- Red LED
- Max. consumption at 24 VDC: 23 mA
- Max. consumption at 3 VDC: 18 mA
- Dimensions: 67 x 38 x 32 mm

Available versions



FDFI300E



FDFI300R



FDFI300



> **FDB7130** Conventional reflective beam detector 5-100 m with reflector

Functional Features

Conventional reflective beam detector equipped with laser pointer and digital display for easy alignment. The detector has 4 selectable distance ranges from 8 to 20 meters, from 20 to 40 meters, from 40 to 70 meters, from 70 to 100 meters, and also has 3 selectable sensitivity ranges: 2.6db, 3.8db, 5.8db.

The detector works according to the principle of obscuring the reflected infrared ray.

Technical Features

- Power supply from 20V to 28V
- Standby current: 23mA alarm: 33mA
- White Abs Mechanics
- Size: 90,7x126,87x91,96mm
- Certifications LPCB/CE-CPR EN54-12 BS5839 part 1:2002
- Temperature -10°C +55°C
- Protection IP30



> **FDB930** Programmer for FDB7130

Functional Features

FDB930 is the programmer to use to set distance and sensitivity in the FDB7130 detector. Moreover, it is able to read the parameters set previously.

It is equipped with two AA 1.5v batteries and the detector connection cable

Technical Features

- Power supply 2 AA 1.5V batteries
- Standby current 0u in use 3mA
- Grey ABS Material
- Size 130x54x28mm



> **FDBF100A** Optical smoke barrier operating range up to 100 m

Functional Features

Optical smoke barriers, able to accurately perceive the presence of smoke within 100 meters; with the active infrared technology, the smoke barriers offer a very effective and convenient solution, with an easy way of installation for detecting smoke in large surfaces.

Technical Features

- Detection range: max 100 m
- Function: active infrared (TX + RX)
- Features: microprocessor with serial RS485 output
- Visualization: LCDW module (included) + 3 leds
- Relay Outputs: alarm, fault (separate)
- Current consumption: 90 mA (TX+RX)
- Dimensions (LxHxD): 159 x 211 x 96 mm



Conventional Atex devices Apollo Orbis series

Functional features

Orbis IS is a range of conventional detectors developed from the Orbis series of optical smoke and heat detectors. Orbis is a modern-style line that is electronically compatible with the Apollo Series 60 Intrinsically Safe.

- > **ORB-OP-52027** Conventional optical smoke detector I.S. Orbis series
- > **ORB-OH-53027** - Conventional optical/thermal detector I.S Orbis series
- > **ORB-HT-51151** - Conventional BS thermal detector (fixed temperature) I.S. Orbis series
- > **ORB-HT-51145** - Conventional A1R thermal detector (thermovelocimetric) I.S Orbis series
- > **ORB-MB-50018** - Base for Orbis IS detector
- > **55100-033** - Intrinsically safe button for outdoor use, Orbis series.
- > **55100-031** - Intrinsically safe button for indoor use, Orbis series
- > **29600-378** - Galvanic barrier for conventional detectors, DIN rail mounting.

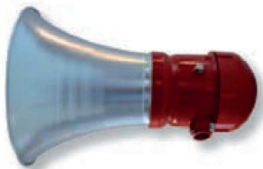
> **FD312B** Atex acoustic signal device



Functional features

- Body and cover made of copper-free aluminium alloy
- AISI 304 screws
- One inlet hole Ø 3/4" ISO 7/1"
- Explosion protection rating:
 - II 2GD Ex d IIC T6 Gb
 - II 2GD Ex tb IIIC T85°C Db
- Protection rating: IP65
- Power supply: 12÷24 Vac/Vcc
- Power: 4 W
- Sound level: 102 dB
- Acoustic frequency: 340 ÷ 2000 Hz
- Service: continuous
- Weight: 1.5 kg
- Operating temperature: - 20 °C ÷ + 55 °C

> **FD320B** Atex Zone 1 and 2 acoustic signal device





> **FD312TB** Atex zone 1 and 2 indicator light

Functional features

- Threaded inlet Ø "ISO 7/1 - NPT - M25X1.5
- AISI 304 protective cage (optional)
- Explosion protection rating:
 - II 2 G Ex d IIC T6
 - II 2 D Ex tD A21 IP 65 T85°C
- Protection rating: IP65
- Power supply: 12/24 Vac/Vdc
- Power: 3 W
- Lamp power: 6 J
- Intermittency: 75 cycles per minute
- Operating temperature: -20° + 40°C
- Weight: 1.6 kg



> **FDRK60BEX** ATEX TX and RX Linear Optical Detector

Functional features

- Transmitter
 - consumption: 1mA
 - infrared source: solid state diode
- Receiver
 - consumption: 10 mA
 - OC output - Open Collector - fault
 - pre-alarm output relay: 1A/24V
 - Alarm output relay: 1A/24V
- Power supply: 12Vdc or 24Vdc (+15-10%)
- Maximum range: 100 m (mod. FD60BEX)
- adjustability: +/- 10° in all directions
- containers: light alloy
- dimensions: 230x230x190



XP95 Apollo Addressable Atex Devices

Functional features

The XP95 intrinsically safe (IS) detectors are a development from Apollo's well-established XP95 addressable analogue range. XP95 IS detectors offer all the advantages of the standard range, but have been specifically developed for use in hazardous areas. The addresses of XP95 IS detectors are defined using a patented XPERT card.



> **55000-640** XP95 IS addressed optical smoke detector



> **55000-440** XP95 IS temperature detector



> **45681-215** Mounting base for I.S. addressable detectors



> **55100-940** I.S XP95 IS addressable button



> **29600-098** Galvanic barrier for XP95 IS detectors



> **55000-855** Single-channel protocol translator, XP95 IS.



> **55000-856** Dual-channel protocol translator, XP95 IS



> **55000-849APO** Output module with isolator



> **55000-812APO** Conventional line module with isolator in DIN rail enclosure



> FD1450 Anti flooding detector in thermoplastic material **on request*

Functional Features

The presence of water is detected through 4 support gilt feet . The alarm is activation by relay . It is available Item FD1450S that connects to the FD 1450 which serves as a probe.

Technical Features

- In parallel , you can connect up to 10 FD 1450s
- 3 relay outputs
- Operating Temperature : + 5C ° - + 50C °
- Operating voltage: 12 ~ 24Vdc
- Maximum consumption : 30mA
- IP Rating 40
- Weight 160g



> FD2450 Anti flooding detector IP 65 **on request*

Functional Features

Sensor for detecting the presence of water through 2 gold pins . The alarm is via a relay activation.

Technical Features

- It is able to detect the presence of liquid with a variable height from 0 to 11 mm
- Equipped with wire 4m
- IP Rating : 65
- N ° 7 -wire connection cable 4m
- Operating Temperature : -15C ° + 70C °
- Operating voltage 12 ~ 24Vdc
- Maximum consumption : 32 mA
- Resting consumption 13 mA
- Weight : 790g



> **FD9000** 1-zone extinguishing panel

Functional Features

1-area extinguishing panel and 3 conventional detection zones. 2 zones with double knock and 1 independent zone.

Technical Features

- LCD display 2x16 characters
- No. 2 relay outputs
- n°4 open collector
- Maximum battery housing 5Ah
- Maximum current deliverable on all 2A outputs
- Size 3410x240x90



> **FDCP109Y** Yellow conventional button

Functional Features

Push-button for manual switching off.

Technical Features

- Power Supply 10-30V DC
- Temperature: -10°C+55°C
- Humidity: 95%
- Size: 90x90x44mm
- Weight: 200g
- Material: yellow ABS
- Degree of protection IP40



> **FDCP109G** Green conventional button

Functional Features

Emergency stop button / extinguishing system

Technical Features

- Power Supply 10-30V DC
- Temperature: -10 ° C + 55 ° C
- Humidity: 95%
- Size: 90x90x44mm
- Weight: 200g
- Material: Green ABS
- Degree of protection IP40



> **FDCP109B** Blue conventional button

Functional Features

Button to activate the extinguishing discharge delay.

Technical Features

- Power Supply 10-30V DC
- Temperature: -10 ° C + 55 ° C
- Humidity: 95%
- Size: 90x90x44mm
- Weight: 200g
- Material: Blue ABS
- Degree of protection IP40

> **CRTIS** Warning signal for switching off inhibition button

> **CRTAS** Warning signal for switching off activation button

> **CRTLTP** Warning signal of room protected by GAS system

Functional Features

Aluminium warning signal for SWITCHING OFF INHIBITION BUTTON.

Technical Features

- Size 160x160x0,5mm (HxLxP)
- Weight 33g



> ONEMINIG 4-20mA linear gas detection unit, 1 loop



Teledata ONEMINIG is a microprocessor-based gas control unit that allows gas detection through 4-20mA wired devices via the ONEMODULE420 module. The control unit can be programmed and queried via a touch screen.

Technical features

- Dimensions 330 x 310 x 80 mm
- Weight (without backup batteries): 3.3 kg
- External structure material: Iron with epoxy coating
- Colours: White, Black
- Front LEDs: 14
- Display background colour: Black, Blue, Green
- Power supply: 230 V AC 50 Hz
- Power consumption: 200 mA
- Backup batteries: 2 x 12 V DC 7.2 Ah
- Auxiliary power output: 24 V DC / 1 A
- Max current available per loop: 500 mA
- Max 1 open or closed loop
- Devices per loop Up to 240 (analogue, digital)
- Devices per control unit Up to 240
- Control units that can be connected in a ring Up to 32 (with ONE RING card)

> ONEMODULE230



Functional features

This device can be used to interface different types of devices. The module has a circuit capable of monitoring the voltage at the relay output in the event of an inductive ohmic load. This function can be set and allows you to know in advance if there is a power failure. In addition, it is possible to read a low voltage input status. ONEMODULE230 is equipped with a short-circuit isolator.

> TSXXX-SEXXX Rivelatori di gas SERIE PRO



IP66 Series

Functional features

- IP65 protection rating
- No. 3 resistive load alarm relays Max 24V/1A SPST
- No. 1 resistive load fault relay Max 24V/1A SPST
- Alarm levels programmable via dip-switch
- No. 1 linear output 4-20mA
- No. 5 LEDs show operating status
- Polarized plug-in terminals



Atex Series

Functional features

- Atex marking
- No. 3 alarm relay and solid state. Max resistive load 24V/1A SPST
- No. 1 fault relay and solid state. Max resistive load 24V/1A SPST
- Alarm levels programmable via dip-switch
- No. 1 linear output 4-20mA
- Polarized plug-in terminals

Detector: Electrochemical (E Series), Catalytic (K Series), Pellistor (P Series)

| Gases to be detected | Risk | Detector Codes | | | |
|--|--------------------------|-----------------------|--------------------|--------------------------------|--------------------------------|
| | | IP65 | | ATEX | |
| | | 4-20 mA | Relè | 4-20mA | Relè |
| Flammable gases | Flammability | | | TS293PXH | SE138PXH |
| Acetylene - C ₂ H ₂ | Flammability | | | TS293PE | SE138PE |
| Acetone - C ₃ H ₆ O | Flammability | TS282PX | SE237PX | TS293PX | SE138PX |
| Hydrocyanic acid - HCN | Toxicity | TS282EHCN | SE237EHCN | TS293EHCN | SE138EHCN |
| Hydrocyanic acid - HCN | Flammability | | | TS293PXH | SE138PXH |
| Hydrochloric acid - HCl | Toxicity | TS282EHCL | SE237EHCL | TS293EHCL | SE138EHCL |
| Isopropyl alcohol (Propanol) - C ₃ H ₈ O | Flammability | TS282PX | SE237PX | S293PX TS293PXH | SE138PX SE138PXH |
| Ammonia - NH ₃ | Flammability | TS282PX | SE237PX | TS293PX TS293PXH | SE138PX SE138PXH |
| Ammonia - NH ₃ | Toxicity | TS282EA | SE237EA | TS293EA | SE138EA |
| Ammonia - NH ₃ - high performance | Toxicity | TS282EAH | SE237EAH | TS293EAH | SE138EAH |
| Carbon dioxide - CO ₂ | Toxicity | TS282IC2 TS282IC2H | | | |
| Sulphur dioxide - SO ₂ | Toxicity | TS282ES | SE237ES | TS293ES | SE138ES |
| Petrol | Flammability | TS282KB TS282PB | SE237KB SE237PB | TS293KB TS293PB TS293PXH | SE138KB SE138PB SE138PXH |
| Nitrogen dioxide - NO ₂ | Toxicity | TS282EN2 | SE237EN2 | TS293EN2 | SE138EN2 |
| Cloro - CL | Toxicity | TS282ECL | SE237ECL | TS293ECL | SE138ECL |
| Heptane - C ₇ H ₁₆ | Flammability | TS282PX | SE237PX | TS293PX TS293PXH | SE138PX SE138PXH |
| Hexane - C ₆ H ₁₄ | Flammability | TS282PX | SE237PX | TS293PX TS293PXH | SE138PX SE138PXH |
| Ethane - C ₂ H ₆ | Flammability | TS282PX | SE237PX | TS293PX TS293PXH | SE138PX SE138PXH |
| Ethylene - C ₂ H ₄ | Flammability | TS282PX | SE237PX | TS293PX TS293PXH | SE138PX SE138PXH |
| Gpl | Flammability | TS282KG TS282PG | SE237KG SE237PG | TS293KG TS293PG TS293PXH | SE138KG SE138PG SE138PXH |
| Hydrogen - H ₂ | Flammability | TS282KI TS282PI | SE237KI SE237PI | TS293KI TS293PI TS293PXH | SE138KI SE138PI SE138PXH |
| Hydrogen sulphide - H ₂ S | Flammability | | | TS293PXH | SE138PXH |
| Hydrogen sulphide - H ₂ S | Toxicity | TS282EH | SE237EH | TS293EH | SE138EH |
| Methane - CH ₄ | Flammability | TS282KM TS282PM | SE237KM SE237PM | TS293KM TS293PM TS293PXH | SE138KM SE138PM SE138PXH |
| Methanol (Methyl alcohol) - CH ₄ O | Flammability | TS282PX | SE237PX | TS293PX TS293PXH | SE138PX SE138PXH |
| Carbon monoxide - CO | Flammability | | | TS293PXH | SE138PXH |
| Carbon monoxide - CO | Toxicity | TS282ECS | SE237ECS | TS293ECS | SE138ECS |
| Carbon monoxide - CO - high performance | Toxicity | TS282ECH | SE237ECH | TS293ECH | SE138ECH |
| Carbon monoxide - CO and petrol | Toxicity Flammability | TS255CB | | | |
| Carbon monoxide - CO and nitrogen dioxide - NO ₂ | Toxicity Toxicity | TS255CN2 | | | |
| Oxygen - O ₂ | Asphyxia | TS282EO | SE237EO | TS293EO | SE138EO |
| Octane-n - C ₈ H ₁₈ | Flammability | TS282PX | SE237PX | TS293PX TS293PXH | TS293PX TS293PXH |
| Pentane - C ₅ H ₁₂ | Flammability | TS282PX | SE237PX | TS293PX TS293PXH | SE138PX SE138PXH |
| Propane - C ₃ H ₈ | Flammability | TS282PX | SE237PX | TS293PX TS293PXH | SE138PX SE138PXH |
| Styrene - C ₈ H ₈ | Flammability | | | TS293PS | SE138PS |
| Toluene (Toluolo) - C ₇ H ₈ | Flammability | TS282PX | SE237PX | TS293PX TS293PXH | SE138PX SE138PXH |



> FDFL45 IR+UV flame detector

Technical features

- power supply voltage: 12 or 24 Vdc
- consumption: 100 mA
- maximum detection distance: 25m (referring to a target hydrocarbon flame measuring 33x33x5cm - height 20 cm)
- viewing angle: 120°
- independent IR and UV channel sensitivity adjustment
- adjustable response delay: 5-10-20-30 sec with dip-switch
- mounting bracket with joint for wall or ceiling installation and easy orientation
- analogue output: 0-5V
- OC (Open Collector) alarm output
- OC (Open Collector) fault output
- Output relay: 0.5A/24Vdc - full exchange
- LEDs: Alarm, Fault, IR and UV (active)
- Plastic housing
- Protection: IP65
- Electromagnetic immunity: compliant with EN50130 standards
- Dimensions: 142x82x54

> FDFL50 ATEX IR+UV flame detector



Technical features

- detector class: 1 (maximum flame detection distance: 25 m target flame 33x33 cm - height 5 cm)
- optical viewing angle: 120 degrees
- IR spectral response: 0.8-2.8 and 4.2-4.8 microns (depending on model)
- UV spectral response: 185-260nm
- operating temperature: -25 + 75°C
- relative humidity: 0 - 100% RH non-condensing
- automatic thermostatic control system
- internal sensitivity adjustment on 4 levels for IR and 4 levels for UV
- intervention delay adjustment: 4-8-15-30 sec.
- microprocessor-controlled electronics
- Internal automatic periodic function test

Outputs

- alarm output relay: 1 A/ 24 Vdc
- fault output relay: 1 A/ 24 Vdc
- analogue output: 0-5V
- analogue output: 4-20mA (optional) housing: light aluminium alloy
- design: explosion-proof Ex-d IIC T6
- certification: ATEX - CESI 11ATEX019X
- application zones: zone 1 - zone 2 - zone 21 - zone 22
- enclosure dimensions with bracket: 130x185 mm

> **FDEV395 IP 65 spark detector**

**upon request*



Functional features

The FD EV395 spark detector is an electronic device suitable for detecting sparks in pipes or ducts transporting various types of combustible material. The FD EV395 offers the possibility of adjusting the sensitivity and relay activation time. It is also possible to perform a remote function test by connecting it to a test button. *on request

Caratteristiche tecniche

- Power supply: 24 Vdc and Vac
- Consumption: 20mA (50mA in alarm)
- Solid optical viewing angle: 90 degrees
- Maximum detection distance: 50 cm
- Output relay: 6A/24V
- Relay attraction time: 1-10 sec
- Alarm LED indicator
- IP rating: IP65
- Dimensions: 140x135x85
- Weight: 700g

> **FDEV521 Control unit for 2 spark detectors**

Functional features

FD EV-521 Control unit for spark detectors that can be used with the appropriate detectors; it can control 1 or 2 solenoid valves for water spray nozzles to extinguish sparks. It can also control appropriate acoustic signals, activate automatic shutter operation to interrupt the flow, and verify the opening of the shutters via pressure switches in the hydraulic circuit.



Technical features

- Power supply: 220Vac
- Power consumption: 5VA
- Timers: 2 adjustable
- Remote test button for 2 spark detectors
- Output relays: 4 (2 programmable)
- Mains indicator light, solenoid valve 1 and 2 activation
- Pressure switch 1 and 2 control memory indicator light
- Memory reset button
- Rating: IP 54
- Dimensions: 213x180x107 mm



> FDM5411E HOLD OPEN BLACK ELECTROMAGNET holding force 50Km



Technical Features

- Body in ABS with galvanized steel base
- Nickel plated magnet block
- Operating voltage: 24 Vdc - Absorbed current: 70 mA
- Fixed Holding force: > 55 Kg. (on request reduced force to 20 Kg. - LF version)
- Residual anti-magnetism pin on the electromagnet body
- Connector with anti-disturb varistor
- With push button release
- Swinging Armature plate for electromagnets
- Base in galvanized steel
- Armature plate diameter (mm): 55

> FDM5411E HOLD OPEN WHITE ELECTROMAGNET holding force 50Km



Technical Features

- Body in ABS with galvanized steel base
- Nickel plated magnet block
- Operating voltage: 24 Vdc - Absorbed current: 70 mA
- Fixed Holding force: > 55 Kg. (on request reduced force to 20 Kg. - LF version)
- Residual anti-magnetism pin on the electromagnet body
- Connector with anti-disturb varistor
- With push button release
- Swinging Armature plate for electromagnets
- Base in galvanized steel
- Armature plate diameter: 55mm w

> FDM5411F HOLD OPEN ELECTROMAGNET holding force 50Km and alluminium body



Technical Features

- Body in anodized aluminium with base in galvanized steel
- Nickel plated magnet block
- Operating voltage: 24 Vdc - Absorbed current: 70 mA
- Fixed Holding force: > 55 Kg. (on request reduced force to 20 Kg. - LF version)
- Residual anti-magnetism pin on the electromagnet body
- Connector with anti-disturb varistor
- Swinging Armature plate for electromagnets series 180, 190
- Base in galvanized steel
- Armature plate diameter: 55mm

> FDM9412E HOLD OPEN ELECTROMAGNET holding force 140Kmand body alluminium



Technical Features

- Box in black painted steel
- Operating voltage: 24 Vdc / Absorbed current: 70 mA
- Holding force: > 140 Kg.
- Residual anti-magnetism pin on the electromagnet body
- Connector with anti-disturb varistor
- Provided without Armature plate
- With push button release
- Swinging Armature plate for electromagnets
- Base in galvanized steel
- Armature plate diameter: 70 mm



> Additional power units

The new range of supplementary power supplies, certified to EN54-4 and EN12101-10, offers a compact, robust and versatile solution for installers, enabling them to safely power smoke detection and signaling systems from the smallest to the largest installations. The compact and unobtrusive design allows these power supplies to be installed in a visible location such as, for example, a hotel lobby. A series of simple and clear LED indicators are located on the front of the power supply unit to help installers, operators and maintainers, assess the status of the equipment.

- Compact design
- High usable output current
- Rugged and resilient
- Clear LED status indications



Adaptors & power supply unit ONE

| Code | Description |
|-----------------|--|
| TD4027A | Power Supply 24V 1.5A - Certified EN54-4 |
| TD6027A | Power supply 24V 2.5A - EN54-4 certified |
| TD15027A | Power supply 24V 5.5A - EN54-4 certified |
| TD25027A | Power Supply 24V 10A - Certified EN54-4 |

| | TD4027A | TD6027A | TD15027A | TD25027A |
|--|---------------------------|---------------------------|---------------------------|---------------------------|
| Certification | EN54-4 (A2) EN12101-10 | EN54-4 (A2) EN12101-10 | EN54-4 (A2) EN12101-10 | EN54-4 (A2) EN12101-10 |
| Max current for loads | 1,1 A | 1,6 A | 4,6 A | 8,1 A* |
| Output voltage | 27,5 V | 27,5 V | 27,5 V | 27,5 V |
| Power supply | 230 Vac | 230 Vac | 230 Vac | 230 Vac |
| Main frequency | 50 Hz | 50 Hz | 50 Hz | 50 Hz |
| Number of protected outputs | 2 | 2 | 2 | 5 |
| Max batteries | 2 x 12V 9 Ah | 2 x 12V 9 Ah | 2 x 12V 17Ah | 2 x 12V 45 Ah |
| Grid to battery transition time | instantaneous | instantaneous | instantaneous | instantaneous |
| Type of closure | by screw | by screw | by screw | by screw |
| Fault relay | 1A/24Vdc (NC/NO) | 1A/24Vdc (NC/NO) | 1A/24Vdc (NC/NO) | 1A/24Vdc (NC/NO) |
| Selector switch for battery resistance | yes | yes | yes | yes |
| Thermal Probe | yes | yes | yes | yes |
| Temperature | -5°C / +55°C | -5°C / +55°C | -5°C / +55°C | -5°C / +55°C |
| IP | IP 42 | IP 42 | IP 42 | IP 42 |
| Dimensions (mm) | 340 x 250 x 80 | 395 x 356 x 96 | 395 x 356 x 96 | 455 x 356 x 187 |

*8,1 A, divisible over 4 outputs or all 8,1 A over output 5

- > **Bat1201** Rechargeable lead batteries 12Vdc 1,22 Ah 97L x 43P x 51A mm
- > **Bat1202** Rechargeable lead batteries 12Vdc 2 Ah 178L x 35P x 61A mm
- > **Bat1207** Rechargeable lead batteries 12Vdc 7 Ah 151L x 65P x 94A mm
- > **Bat1212** Rechargeable lead batteries 12Vdc 12 Ah 151L x 99P x 95A mm
- > **Bat1217** Rechargeable lead batteries 12Vdc 17 Ah 181L x 76P x 167A mm
- > **Bat1225** Rechargeable lead batteries 12Vdc 25 Ah 166L x 175P x 125A mm
- > **Bat1240** Rechargeable lead batteries 12Vdc 40 Ah 197L x 165P x 170A mm

Batteries



> **FD200001** Rod for removing the detector

The universal model is suitable for a very wide range of detectors. Suitable for vertical and angular use. Allows the detector positioned on ceilings to be hooked and unhooked from the base. When combined with telescopic rods, this product allows detectors located up to 9 m high to be reached.



> **FD330001** Smoke and CO detector tester

The device allows simulated smoke (sold separately) to be safely and effectively introduced into the detector chamber. Suitable for most detectors, the dispenser has a test cup that provides a clear view of the sensor LED. Its spring-loaded mechanism helps conserve the aerosol and minimize waste. Smoke dispensers can be used with telescopic access rods to test smoke detectors installed out of normal reach.

- Patented diaphragm reduces gas particle dispersion.
- Spring-loaded mechanism
- Adaptable to detectors up to 100mm in diameter
- Designed for use at height and at angles
- UL approved

Telescopic access pole



> **FD100001** 4.5 m telescopic pole



> **FD108001** 2.5 m telescopic pole



> **FD101001** 1.13 m extension pole

Telescopic access poles are necessary for detectors that are out of normal reach. Using them saves time, money, inconvenience, and safety risks associated with ladders, scaffolding, or harnesses. Telescopic poles are extremely lightweight and extend quickly to provide access to detectors up to 9 meters away.

- Certified non-conductivity
- Material: Pull-wound fiberglass
- Simple locking mechanism
- Available in one, two, or four telescopic sections



> **FDA3001** Simulated smoke (aerosol in packaging)

Spray can containing aerosol for testing smoke detectors.

- UL and ULC approved
- Non-flammable
- Rapid activation
- Rapid dissolution
- No toxic residues



Monitoring Software

> Winwatch Enterprise

**Integrated centralized management:
Burglar alarms, Fire detection,**

Software to control and manage an unlimited number of TELEDATA panels

INTEGRATED AND TECHNOLOGICAL DEVICES

- Integrated multi-protocol multimedia software
- In WINDOWS XP environment with interactive and user-friendly graphic interface
- Remote-control, remote management and remote-programming for all devices
- Up to 3 levels of integrated graphic-maps for direct operations
- Hierarchic access password system
- Operator events log
- Message Exchange system integrated with the system
- Server-client structure with architecture on IP networks
- Point-to-point, multidrop, switched
- Operative on LAN WAN WIFI networks with TCP/IP protocol support
- Multi monitor management to
 - View alarms and command sending and receiving statuses
 - View dynamic graphic-maps
 - View sensor symbols with graphic and sound status indication
 - View graphic-maps with integrated video streaming
 - View video cameras in multiscreen mode
- Modular and scalable software
- Send and receive alarm events via SMS and MAIL
- Unique integrated database for event searching and analyses
- Customizable to suit all customer requirements
- Integrated database
- Able to manage subsystems of different producers with the purchase of special modules for:
 - Fire detection units, Burglar alarm units, Access control readers and modules, Digital recorders, Video matrixes, Technological systems

For further information, please contact our Technical Department

Additional software modules available

> WIN TERMINAL Integrated centralized control

- Software to control and manage up to 2 TELEDATA panels

> WIN SUPER Integrated centralized control

- Software to control and manage up to 6 TELEDATA panels

> WIN MAX Integrated centralized control

- Software to control and manage up to 12 TELEDATA panels

> WIN CLIENT TERMINAL Client work station control software

- Ideal for creating work stations with different potential options and access levels.
- Possibility to control the remote devices as if it was operating at the server
- Shared database
- Up to 10 clients can be enabled
- IP protocol management

> WIN MAPPE TERMINAL Graphical-map license

- Software to use the graphic maps on the TELEDATA monitoring systems
- The software must be activated on each work station it is required to run on
- Requires 2nd monitor

Integrated monitoring software with Graphical Maps









Headquarter:
20063 Cernusco sul Naviglio (MI) - Via Brescia 24 G - Italy
Tel. +39 02 27 201 352 - +39 02 25 92 795
mail: info@teledata-i.com



DESIGN
MILANO